

GREAT EASTERN RAILWAY SOCIETY SALES LIST – OCTOBER 2024

Great Eastern Railway Society publications embrace a wide range of documentation relating to the GER, its predecessors & its successors as well as the LT&SR and M&GN.

All items, other than GERS Journals and Newsletters for reasons of copyright, are available for sale to non-members. An underlined *price* tells you that it has changed. Unless noted otherwise, you can obtain a rough idea of the number of pages in any Information Sheet by its cost; each page contributes approximately 10p to the price.

Should you wish for more details of any item, if you are able to go on-line look it up in the 47-page expanded sales list (which you can download from Sales/Sales List). Otherwise please ask the Publications Sales Officer – email and postal addresses are on the back page. If it is done by post, an SAE for the reply would be much appreciated.

This **Sales List** is for buying printed items, and is also one route for ordering our 'off-the-shelf' software. The **Files Emporium** in the Sales section of our web site (www.gersociety.org.uk) offers the purchase of files which are cheaper than the corresponding printed items, with no postage to add. There are also many files which are exclusive to the Emporium: you pay by PayPal or card, and in most cases your selection can be downloaded immediately. You can also order the 'off-the-shelf' software via the Emporium, without have to write a letter, find a stamp and remember to post it!

1. GREAT EASTERN RAILWAY SOCIETY JOURNALS & NEWSLETTERS

- GERS Journals and News are available only to GERS members and libraries for reasons of copyright.

The Journals marked * are out of print. Unless instructed otherwise, for J1-26 you will be sent a new improved edition. For the rest you will be sent a second-hand original in fair condition if one is available, if not we will supply a photocopy-type reproduction.

Code	Date	J14* 04/78	J28* 10/81	J42 04/85	J56* 10/88	J70 04/92	J84 10/95	J98 04/99	J112 10/02	J126 04/06	J140 10/09	J154 04/13	J168 10/16	J182 04/20
J1*	09/74	J15* 07/78	J29* 01/82	J43 07/85	J57 01/89	J71* 07/92	J85 01/96	J99 07/99	J113 01/03	J127 07/06	J141 01/10	J155 07/13	J169 01/17	J183 07/20
J2*	02/75	J16* 10/78	J30* 04/82	J44 10/85	J58* 04/89	J72 10/92	J86* 04/96	J100 10/99	J114 04/03	J128 10/06	J142 04/10	J156 10/13	J170 04/17	J184 10/20
J3*	07/75	J17* 01/79	J31* 07/82	J45* 01/86	J59 07/89	J73* 01/93	J87 07/96	J101 01/00	J115 07/03	J129 01/07	J143 07/10	J157 01/14	J171 07/17	J185 01/21
J4*	09/75	J18* 04/79	J32* 10/82	J46* 04/86	J60 10/89	J74* 04/93	J88 10/96	J102 04/00	J116 10/03	J130 04/07	J144 10/10	J158 04/14	J172 10/17	J186 04/21
J5*	01/76	J19* 07/79	J33* 01/83	J47 07/86	J61* 01/90	J75* 07/93	J89 01/97	J103 07/00	J117 01/04	J131 07/07	J145 01/11	J159 07/14	J173 01/18	J187 07/21
J6*	03/76	J20* 10/79	J34* 04/83	J48 10/86	J62* 04/90	J76* 10/93	J90 04/97	J104 10/00	J118 04/04	J132 10/07	J146 04/11	J160 10/14	J174 04/18	J188 10/21
J7*	06/76	J21* 01/80	J35* 07/83	J49 01/87	J63* 07/90	J77* 01/94	J91 07/97	J105 01/01	J119 07/04	J133 01/08	J147 07/11	J161 01/15	J175 07/18	J189 01/22
J8*	10/76	J22* 04/80	J36* 10/83	J50 04/87	J64* 10/90	J78 04/94	J92 10/97	J106 04/01	J120 10/04	J134 04/08	J148 10/11	J162 04/15	J176 10/18	J190 04/22
J9*	01/77	J23* 07/80	J37* 01/84	J51 07/87	J65* 01/91	J79 07/94	J93 01/98	J107 07/01	J121 01/05	J135 07/08	J149 01/12	J163 07/15	J177 01/19	J191 07/22
J10*	04/77	J24* 10/80	J38* 04/84	J52* 10/87	J66* 04/91	J80* 10/94	J94 04/98	J108 10/01	J122 04/05	J136 10/08	J150 04/12	J164 10/15	J178 04/19	J192 10/22
J11*	07/77	J25* 01/81	J39 07/84	J53* 01/88	J67* 07/91	J81* 01/95	J95 07/98	J109 01/02	J123 07/05	J137 01/09	J151 07/12	J165 01/16	J179 07/19	J193-1999
J12*	10/77	J26* 04/81	J40 10/84	J54* 04/88	J68* 10/91	J82 04/95	J96 10/98	J110 04/02	J124 10/05	J138 04/09	J152 10/12	J166 04/16	J180 10/19	
J13*	01/78	J27* 07/81	J41 01/85	J55 07/88	J69* 01/92	J83 07/95	J97 01/99	J111 07/02	J125 01/06	J139 07/09	J153 01/13	J167 07/16	J181 01/20	

- Prices for the Journals are: J1 to J60 £2.00 each; J61 onwards £2.50 each. Their files may be ordered via the Emporium at 50p each.
- Some Newsletters from No 70 onwards remain and these are offered at £0.50 whilst stocks last. A reproduction or sometimes a second-hand original can be supplied of any Newsletter from No 1 (Nov 1973) onwards. Please contact the Publications Sales Officer, enclosing an SAE if by post, for a quote.
- Journals 1-200 will be issued on a data DVD which also includes GE News 1-200 - see Section 13.
- For Journal indexes see Information Sheet N127 for J1-100 and N151 for J101-200 (Section 3). These are also available on a CD-ROM (Section 13).

We are interested in purchasing second-hand copies of any out-of-print Journals (those indicated in the list by an asterisk) from Journal 27 onwards. THEY MUST BE IN GOOD CONDITION.

2. GREAT EASTERN RAILWAY SOCIETY JOURNAL & INFORMATION SPECIALS AND OTHER PUBLICATIONS

Code	Price(£)	Description			
J51	1.20	Visit to Lowestoft July 1978	A4	2.00	Return to North Woolwich. The North Woolwich Railway and Transport around the Royal Docks. Published by Passmore Edwards Museum Trust Enterprises Ltd and compiled by the Great Eastern Railway Society. A5 format, 48 pages (7pp text & 41pp of 79 half-tone illustrations and 2 line maps) plus 3 full-colour illustrations on covers.
J52	3.00	Visit to Harwich and Parkeston, Sep 1979			
J53	3.00	All Stations to Liverpool Street Mar 1981			
J54	2.50	GN & GE Jt Railway Centenary Oct 1982			
J55	0.50	The Eastern Counties Railway Jun 1989	A5	0.80	A Short History of Stratford Major Depot 1914-1991. An A5 booklet (16 type-written pages) presented originally on the occasion of the naming of Class 31 No. D5583 as Stratford Major Depot in 1991 to commemorate the closure of Stratford Depot.
A1	1.75	Information Special No. 1. Railway Gazette reprint from Oct. 1st 1920: 'GER - The Last Word in Steam Operated Suburban Train Services' 31p, illustrated with card covers.	A6	2.40	GER 0-4-4 Tank Locomotives. Geoffrey Pember's superb book containing maps, photos and drawings of GER 0-4-4T loco-motives used for suburban services. Land-scape A4 size; 32p. The remaining originals all have slightly damp-marked covers (which the price reflects). If requested a photo-copied reproduction can be supplied instead.
A2	5.00	Information Special No. 2. Sectionalised Diagrammatic System Map (1919). Fully indexed. 46 pages. [Also on CD-ROM for £3.50 - Section 13]			
A3	2.00	The Locomotive and Carriage Works at Stratford and the Wagon Works at Temple Mills. Facsimile reproduction of the GER publication dated June 1921. 20pp text, 37 photographs, 19 locomotive diagrams & 2 pull-out maps. Soft covers.			

3. INDEXES, LISTS & CATALOGUES

- The indexes for individual volumes of the Journal are normally provided as Information Sheets. If you specify that they are for binding, however, they will be supplied minus the cover page and the sheets will not be stapled together.
- The indexes for Journals 1-100 and for J101-160 can be supplied either singly or together on a CD-ROM - see Section 13 (Software).

L115	2.20	Stratford Works: Loco Works List	N112	1.20	Windwood Collection Index Part 1 (NRM Photos)
M102	2.00	List of documents: GER and constituents at TNA Kew	N113	1.60	GE Journal (GERS): Index to Vol 8, suitable for binding
M118	0.70	Railway material in Suffolk Record Office	N116	1.90	Windwood Collection Index Part 2 (NRM Photos)
M168	2.00	Index to drawings of E. Anglian railways in model railway press 1925-2000	N119	1.00	GE Journal (GERS): Index to Vol 9, suitable for binding
M183	2.00	GER etc: Board of Trade Documents in TNA	N122	4.00	Catalogue of the Liverpool Street Maritime Photos Collection at the NRM.
M318	1.50	Summary of Inspections of New Works 1920-1958	N124	0.40	Index Metro Cammell Collection East Anglian Drawings
M322	1.60	Index of Further Material at the TNA (See M102, M183 & M318 for related documents) [M102, M183, M318 M322: £7.00 per set. They are also available on a CD-ROM - see TNA in Section 13 (Software).]	N125	0.40	Index to GE Library from Liverpool Street at Essex Record Office.
M487	1.50	GE items in Railway Magazine 1937, 1939-44, 1954-69	N127	4.00	GE Journal (GERS): Combined Index to Vols 1-10 (Issues 1-100)
N100	0.80	GE Album (R. C. Riley): Index to Photos	N128	1.00	GE Journal (GERS): Index to Vol 10, suitable for binding
N101	0.30	GE Journal (GERS): Index to Vol 1, suitable for binding	N130	1.00	GE Journal (GERS): Index to Vol 11, suitable for binding
N102	0.40	GE Journal (GERS): Index to Vol 2, suitable for binding	N131	0.60	Index to LNER Mileage Diagrams at the PRO
N103	1.00	Index: GE articles etc. in railway press 1950 - 1975	N132	2.00	Railway-related documents at the Norfolk Record Office
N104	0.40	GE Journal (GERS): Index to Vol 3, suitable for binding	N134	0.80	GE Journal (GERS): Index to Vol 12, suitable for binding
N105	0.40	GE Journal (GERS): Index to Vol 4, suitable for binding	N137	1.00	GE Journal (GERS): Index to Vol 13, suitable for binding
N106	1.50	Index: GE articles etc. in railway press 1897 - 1949	N139	0.80	GE Journal (GERS): Index to Vol 14, suitable for binding
N107	0.50	GE Journal (GERS): Index to Vol 5, suitable for binding	N141	0.80	GE Journal (GERS): Index to Vol 15, suitable for binding
N108	0.50	GE Journal (GERS): Index to Vol 6, suitable for binding	N143	0.80	GE Journal (GERS): Index to Vol 16, suitable for binding
N109	0.70	GE Journal (GERS): Index to Vol 7, suitable for binding	N145	0.80	GE Journal (GERS): Index to Vol 17, suitable for binding
N110	1.50	Index for Aspects of East Anglian Steam Vols 1-6	N147	0.80	GE Journal (GERS): Index to Vol 18, suitable for binding
N111	1.50	Index for East Anglian Steam Gallery Vols 1-6	N149	0.80	GE Journal (GERS): Index to Vol 19, suitable for binding
			N150	1.00	GE Journal (GERS): Index to Vol 20, suitable for binding
			N151	4.00	GE Journal (GERS): Combined Index to Vols 11-20 (Issues 101-200)

4. INFRASTRUCTURE, THE DEVELOPMENT OF THE SYSTEM, & GENERAL

M133	1.20	GER Passenger stations & mileages (miles & chains) from WTT of 1922	M417	1.80	Extracts from the <i>Railway Magazine</i> of 1906, including signalling at Liverpool Street and the GER's internal cross-country train connections – what was on offer to a traveller from King's Lynn to Chelmsford, say.
M158	0.80	Extracts - Railway Chronicle Jan 1845	M420	1.80	Basic Ticket Office Procedure: A Guide for Railmen engaged in Ticket Office Duties. Liverpool Street 1969.
M165	1.90	GER: Pay & Conditions 1891-1915	M421	1.00	Details of and regulations for workmen's & other tickets, GE Section London suburban area, winter 1937/8
M167	0.90	Reprint: Jubilee of the GER 1862-1912	M422	1.00	Cheap tickets on Early Closing Days and Saturday afternoons (LNER handbill, 1927).
M174	0.90	GER: Statement on Great Eastern & Northern Junction Rly	M432	2.00	The late Victorian period from the workers' viewpoint – gleanings from the monthly ASLEF <i>Journal</i> of 1900, with Stratford branch comments.
M184	1.70	LNER: Proposed electrification of GE suburban lines - 1933	M435	2.00	Horace Melbourne's Railway Memoirs from 1897 to early LNER days. He was a driver/mechanic on GER buses, Sir Henry Thornton's personal chauffeur and later developed motorised cartage for the GER. [<i>Part 2 of his memoirs appear solely in the Files Emporium as RH021</i>]
M185	1.60	GER: Historical Calendar 1836-1923	M440	1.00	BR model railway souvenir brochure, undated 1950s.
M286	1.20	N&S Joint Committee Financial Accounts & Statistical returns 1927	M441	1.50	The GE Works at Stratford from an illustrated magazine of 1892. (N.B. this is also the GE chapter in 'Round the Works of our Great Railways'.)
M289	2.70	GER Statement of Financial Accounts & Statistical Returns 1913	M442	1.50	W.H.Smith's newspaper distribution and bookstall activities, from an illustrated magazine of 1892.
M291	1.40	GER Special Orders for the Opening of the Wickford - Southminster Branch 1889	HE	1.00	120 Years of Hertford East Station (1888-2008) by David Dent. 8-page A5 booklet with photos and coloured card covers. Limited Stock.
<i>Three Excerpts from Edwin A Pratt's 1921 book British Railways & the Great War:-</i>					
M292	0.80	The GER and the Air-Raids	M446	2.00	The railways of Britain compared to those overseas: extracts from a 1893 book by J Pearson Pattinson.
M294	1.90	The Great Eastern Railway	M447	1.50	How others saw us: extracts from <i>The History of the GNR</i> by Grinling, 1903: Part 1 1827 to 1862.
M298	2.00	Whitemoor Marshalling Yard (LNER 1929)	M453	1.50	How others saw us: Part 2 1863 to 1902.
M301	1.10	Liverpool St - Shenfield - Southend: Conversion DC to AC 1960	M452	2.00	World War 1, as depicted in the <i>Railway Magazine</i> : Part 1 1914-5.
M304	0.70	Temple Mills New Marshalling Yards (BR)	M458	2.00	World War 1, as depicted in the <i>Railway Magazine</i> : Part 2 1916-7.
M306	1.70	GER Mileage Tables - Introduction & Index. The index relates each section of line to a GER book of measured distances which contains 254 numbered handwritten pages. If you wish you may then order prints of any individual pages from the book at a cost of 10p per page.	M459	2.00	World War 1, as depicted in the <i>Railway Magazine</i> : Part 3 1918-9.
M312	5.00	GER Bridge Number Book 1911	M463	1.00	Parliamentary Regulations applicable to new railways in the mid-1800s.
M319	2.70	Gradients of the LNER (circa 1930)	M465	1.00	GER Extracts from <i>Our Railways</i> by Pendleton, 1896.
M321	3.90	Handbook of Stations (1956 RCH extract)	M475	3.00	The Eastern Union Railway
M325	1.00	Harwich - Zeebrugge Train Ferries	M481	2.00	Regulations relating to Yarmouth's tramways 1871-1902
M327	0.30	GER 1893 Special Orders No.1441. Bow - Stratford Widening	M486	2.00	Codes of Practice for Permanent Way Workers 1952
M341	2.40	'The Railways of England' W M Acworth 1889. GER extract	M488	2.00	Air Raid Precautions, LNER 1940
M350	0.60	GER Directors	M494	1.50	Regulations applicable to tickets & passengers' luggage, 1950.
M373	2.00	Selected extracts from the <i>Railway Magazine</i> , Jul-Dec 1899 (including the Whittlesea brick traffic, Liverpool Street station, the Southwold Railway and Goods documentation)	M501	1.20	The East Anglian Railway (from 1909 <i>Railway Magazine</i>)
M376	2.60	Selected extracts from the <i>Railway Magazine</i> , Jul-Dec 1898 (including Lord Claud Hamilton, GE shipping, winter resorts on the E. Coast and a humorous account of goods classifications)	M510	1.20	The Liverpool Street to Shenfield electrification 1949. BR/George Dow.
M394	1.50	The Railways of Beckton Gasworks, from the <i>Railway Magazine</i> 1907.	M532	1.00	The centenary of the railway inspectorate, 1940.
M395	1.50	The LT&SR Widening between Bromley and Barking, from the <i>Railway Magazine</i> , 1904 & 1908.	M534	1.50	NEW. The Wells-next-the-Sea branch.
M407	2.20	Extracts from the <i>Railway Magazine</i> 1899 (including Histon jam traffic, GE electrical passenger-guard communication, and the GN&GE Joint			
M414	2.20	Extracts from the <i>Railway Magazine</i> 1913 (including GER restaurant cars, the performance of the new 4-6-0s & Britain's shortest railway).			

5. LOCOMOTIVES & TRAIN WORKINGS

HC100	1.20	Headcodes: GER 1896-7	M166	1.20	F. V. Russell's Patents: Auto Station Indication & Valve Gear Improvements
HC101	1.10	Headcodes: EC, Blackwall & GE Rlys 1846-87	M172	0.70	Railway Inspectors Diary 1842-7 (Maj Gen Pasley - E. Anglia)
HC102	1.10	Headcodes: LNER (GE sect) May 1942	M173	0.60	Tickets & Ticket Holders 1917
HC103	1.00	Headcodes: LNER (GE sect) October 1927	M176	1.00	GER: Estimated losses, Goods Traffic 1890
L100	1.20	Locomotives 1858-1923: Running Nos., Dates of building, renumbering etc.	M182	2.10	LNER (GE/M&GN) Engine Whistle Codes
L101	2.40	Westinghouse Equipment: GER illustrated description & instructions	M187	1.20	GER: Workmen's' Trains: BOT Reports etc
L103	0.70	The Decapod: <i>Locomotive Magazine</i> extracts 1903/4	M202	2.60	GER Goods Dept Notices - 1890s selection
		Locomotives of the GER: <i>Locomotive Magazine</i> reprints 1901-1913:	M214	0.70	GER accommodation plans: 3 Continental Expresses and 3 Steamers
L104	3.20	Part I. L105 2.40 Part II. L106 2.50 Part III. L107 2.50 Part IV. L108 2.40 Part V. (L104/5/6/7/8 £11.00 per set - also available on LM.CD)			<i>Report: Traffic Problems of the GER Suburban Area (Sept 1918) - British Westinghouse Co.</i>
L109	2.00	F. V. Russell paper: Steam v Electric Haulage for Suburban Trains	M232	5.70	Part 1: Summary and Passenger & General Traffic
L110	2.10	Locomotives of the GER: <i>Locomotive Magazine</i> reprints 1937-1939 Part VI [Now on CD with L104-108 - Section 13]	M233	1.10	Part 2: Goods Traffic
L111	0.50	ECR 1854: Instructions to Foremen in charge of engines	M235	3.20	Part 4: Electrification
L112	2.00	GER/LNER Loco Nos., Data & Diags to 1934 (reprint of Official book)	M237	3.90	Part 5: Statistics & Financial
L114	4.10	Locomotive & train working in the latter part of the 19th century: Reprint of E. L. Ahrons articles	M238	2.10	Part 6: Graphs, Diagrams & Plans
L115	2.20	Stratford works locomotive list	M238	2.10	1927 Report & letter by F. V. Russell: East Side Suburban Services and their Improvement
L116	1.00	Locomotive Power Classes & Goods Train Loads 1910	M288	1.80	GER Local, Interchange & Scotch Privilege Ticket Circular 1913
L117	0.80	Locos of the Colne Valley & Halstead Railway (from <i>Locomotive Magazine</i> 1911)	M295	2.30	GER Programme of Cheap Ticket, Train and Luggage Arrangements Summer 1911
L118	2.50	Passenger Locomotive Rosters in the Norwich District Summer 1953	M297	2.30	Instructions for Working Electric Trains Liverpool St-Shenfield (BR 1949)
L119	2.50	GER Area Country Branch Carriage Workings September 1950	M299	1.10	Arrangements for Conveyance of Theatrical Companies & Music Hall Artists (GER 1912)
L120	2.50	Freight Train Engine Diagrams and Trainmen's Workings in the Norwich District June to September 1953	M300	1.00	Continental Carriage Workings (BR 1967)
		[The print on L118-120 is clear but small. They are also available on a CD-ROM to obtain a larger view - see Section 13]	M302	0.40	Instructions Regarding Working of Royal Trains (1968)
L121	3.00	Cambridge Main Line Carriage Workings Sep 1953	M303	5.40	Route Training Manual Liverpool St - Ipswich and Branches (BR 1965)
		[Also issued as part of a CD-ROM of GE Carriage Workings (Section 13)]	M305	3.40	Drawings of S46 'Claud Hamilton' 1903. (Note that these are of separate castings etc rather than of the whole locomotive)
L122	1.00	Regulations for working Vacuum & Westinghouse Automatic Brakes and Slip Carriages. LNER 1926.	M313	2.80	Routes & Forwarding Instructions GE Section to Scotland (LNER 1925)
L123	4.00	Logs of Journeys on the LNER 1941-1947. 71 runs, mainly Cambridge-London (both routes) and Shenfield-London, with a few trips in Scotland.	M314	3.00	1934 LNER General Instructions for Goods Wagons
L124	3.00	Logs of Journeys on the LNER 1935-1939. Apart from one run to Norwich via Cambridge and back via Ipswich, these are all on the Cambridge to Liverpool Street and Kings Cross lines.	M317	5.80	Instructions to GE Line Staff working over various London Transport lines (1960 BTC Instruction No. 3500)
L125	3.00	Logs of Journeys on the LNER 1939-1941.	M324	1.00	GER 1921 Train Control Instructions
L126	3.00	Locomotives of the ECR 1838-1860.	M326	1.70	LT Traffic Circulars: Epping - Ongar Branch
L127	3.00	Handbook for crews of steam railcars & Sentinel shunters, LNER 1933	M336	0.80	GER 1913 Form of Examination for Look-Out & Flag Men
M132	0.90	Questions & Answers: Locomotives & Rule Book	M357	4.00	BR(E) Route Training maps from 1969 for Fenchurch St. to Shoeburyness, Barking to Tilbury (Riverside) and Tilbury (Riverside) to Pitsea.
M136	0.90	GER Instructions: Accidents, Mishaps or Obstructions on the Line (F. V. Russell)	M393	2.50	The G. E. Suburban Services in the 'pre-Jazz' Era, from the <i>Railway Magazine</i> 1907-8
M141	1.00	LNER Wartime Emergency Arrangements	M403	2.40	Traffic census of passengers carried in the GER London area on a Tuesday in October 1961
M152	1.40	East London Railway: Working Instructions - March 1923	M418	2.00	'The GER Expresses' - a set of 3 C J Allen articles from 1906.
M157	1.60	GER Instructions: Reporting Trains 1910	M457	3.20	BoT report into the 1874 collision between Norwich and Brundall.
M164	0.90	Jazz Trains: Memo to Public & Staff	M474	1.00	Operating the railways around Cromer in 1908.
			M480	1.50	Instructions for train and traffic control 1950.
			M516	1.50	New overnight freight Ipswich to Cardiff 1955
			M530	2.00	The Trowse collision, 1949.
			M531	1.50	The working of GE sugar beet traffic, 1936 season.

6. MINUTES OF MEETINGS

- These are comprehensive summaries of minutes of meetings of Shareholders, Boards of Directors and Committees taken from the original minute books held at Kew.
- Except where otherwise stated, pricing is standard irrespective of length: up to four sets of Minutes 80p each; any five or six 70p each; seven or more 60p each.

All the Minutes are also available on CD-ROMs – see Software (Section 13). These have the big advantage that they are fully word-searchable, and include extras such as a first-timer's guide to the National Archives, copies of M102, M183, M318 and M322, and tables of weights, measures and money in Victorian times.

ECR Provisional Committee: M195 1834-July 1836

ECR Board of Directors:

M196 Jul-Dec 1836	M198 Jul 1837-Feb 38	M200 May-Aug 1838	M204 Jan-Feb 1839	M206 Jun-Sep 1839	M208 Jan-Apr 1840	M210 Apr 1841-Sep 42
M197 Jan-Jun 1837	M199 Feb-May 1838	M203 Aug-Dec 1838	M205 Mar-Jun 1839	M207 Sep-Dec 1839	M209 Apr 1840-Mar 41	M211 Oct 1842-Apr 44

ECR United Extension Committee & Board of Directors:

M212 Oct 1843-Dec 44	M215 Jan-Aug 1845	M216 Aug 1845-Apr 46	M217 Apr 1846-Jun 49	M218 Jun 1849-May 50	M219 Jun 1850-Mar 51
----------------------	-------------------	----------------------	----------------------	----------------------	----------------------

ECR United Extension Sub-Committee M437 Oct 1843-May44 (£2.00)

ECR Committee of Management (£2.00 unless otherwise stated)

M448 Jan-Jun 1841	M450 Dec1841-May1842	M454 Oct 1842-Feb 43	M456 July 1843 – May 44
M449 Jun-Dec 1841	M451 May-Oct 1842	M455 Feb to July 1843	M438 Jun-Sep1844 (80p)

ECR Board of Directors:

M220 Mar 1851-Apr 52	M221 Apr 1852-Jan 53	M222 Jan 1853-Nov 53	M223 Nov 1853-Jun 54
----------------------	----------------------	----------------------	----------------------

ECR Shareholders & Board of Directors:

M224 Jun 1854-Mar 55	M242 Dec 1855	M246 Feb - May 1856	M250 Apr - Jul 1857	M254 Dec 1858 - Jul 59	M258 Apr-Nov 1861
M239 Mar - Sept 1855	M243 Dec 1855	M247 Jun - Sep 1856	M251 Jul - Oct 1857	M255 Jul - Dec 1859	M263 Dec 1861-Aug 62
M240 Sept - Nov 1855	M244 Dec 1855	M248 Sept - Nov 1856	M252 Nov 1857-Apr 58	M256 Dec 1859-Jun 60	
M241 Dec 1855	M245 Dec 1855-Feb 56	M249 Dec 1856-Mar 57	M253 Apr - Dec 1858	M257 Jun 1860-Mar 61	

ECR Locomotive & Engineering Committee & Committee of Claims:

M201 May-Sep 1849 & Oct 1849-Oct 1850

ECR Permanent Way & Works Committee

M466 Nov1855-Mar56

ECR Traffic, Locomotive & Permanent Way Committee:

M156 May-Jul 1857	M161 Jan-Mar 1858	M169 Oct-Dec 1858	M177 Jul-Sep 1859	M180 Apr-Jun 1860	M189 Jan-Mar 1861	M192 Oct 1861-Jan 62
M159 Aug-Sep 1857	M162 Apr-Jun 1858	M170 Jan-Mar 1859	M178 Oct-Dec 1859	M181 Jul-Sep 1860	M190 Apr-Jul 1861	M193 Jan-May 1862
M160 Oct-Dec 1857	M163 Jul-Sep 1858	M171 Apr-Jun 1859	M179 Jan-Apr 1860	M188 Oct-Dec 1860	M191 Jul-Oct 1861	M194 May-Jul 1862

ECR Sunday Committees:

- Because of the size of these Information Sheets, unless indicated otherwise they are regarded as 'Minutes Specials' and are priced at £2.50 each.

M423 Mar 1851-Jul52	M426 Feb-Sep 1854	M412 Nov 1855-Apr 56	M402 Jan - Mar 1857	M443 May45-Jun46 (£2)	M461 Jul38-Apr40 (£2)	M462 deals with Finance & Engineering, M464 with Finance.
M424 Aug 1852-Apr53	M406 Sep 1854-Jun 55	M400 Apr - Aug 1856	M405 Mar - May 1857	M444 Jul46-Aug49 (£2)	M462 Jan39-Jan41 (£2)	
M425 May 1853-Jan54	M411 Jul - Nov 1855	M401 Sep - Dec 1856	M439 Sep44-May45 (£2)	M445 Oct49-Dec50 (£2)	M464 Jan39-Jan41 (£2)	

ECR Traffic Committee:

- Because of the size of these Information Sheets, they are regarded as 'Minutes Specials' and are priced at £2.00 each.

M427 Nov1844-Jun45	M429 Jan1846-Jun47	M431 Nov1848-Sep49	M434 March-Dec1850
M428 Jun1845-Jan46	M430 Jul1847-Nov48	M433 Sep1849-Feb50	M436 Jan-Dec1851

GER Locomotive and Way & Works Committee:

M121 1871-2	M123 1874	M125 1876	M127 1878	M129 1880	M135 1882-3	M140 1887-9
M122 1873	M124 1875	M126 1877	M128 1879	M134 1881	M137 1883-6	

GER Locomotive Committee:

M105 1866-7	M106 1869-71	M107 1894-1901	M108 1902-7	M109 1907-11	M110 1911-22
-------------	--------------	----------------	-------------	--------------	--------------

GER Locomotive & Permanent Way Committee:

M103 1862-4

GER Shareholders & Board of Directors:

M264 Aug 1862-Feb 63	M275 Apr - May 1867	M315 Jul 1873 - Dec 74	M344 Jan - Dec 1885	M356 Jan - Dec 1896	M369 Jan - Dec 1907	M384 Jan - Dec 1918
M265 Feb - Aug 1863	M276 Jun - Sep 1867	M332 Jan - Dec 1875	M345 Jan - Dec 1886	M358 Jan - Dec 1897	M372 Jan - Dec 1908	M385 Jan - Dec 1919
M266 Aug 1863-Jan 64	M277 Sep 1867-Feb 68	M333 Jan - Dec 1876	M346 Jan - Dec 1887	M360 Jan - Dec 1898	M374 Jan - Dec 1909	M386 Jan - Dec 1920
M267 Feb - Sep 1864	M278 Feb - Jun 1868	M334 Jan - Dec 1877	M347 Jan - Dec 1888	M361 Jan - Dec 1899	M375 Jan - Dec 1910	M387 Jan - Jun 1921
M268 Oct 1864-Apr 65	M279 Jul 1868 - Feb 69	M335 Jan - Dec 1878	M348 Jan - Dec 1889	M362 Jan - Dec 1900	M377 Jan - Dec 1911	M388 Jul - Dec 1921
M269 Apr - Oct 1865	M280 Feb - Oct 1869	M337 Jan - Dec 1879	M349 Jan - Dec 1890	M363 Jan - Dec 1901	M378 Jan - Dec 1912	M389 Jan - Jun 1922
M270 Oct 1865- Mar 66	M281 Nov 1869-Jun 70	M338 Jan - Dec 1880	M351 Jan - Dec 1891	M364 Jan - Dec 1902	M379 Jan - Dec 1913	M390 Jul1922-Feb23
M271 Mar - Jun 1866	M282 Jun 1870- Jan 71	M339 Jan - Dec 1881	M352 Jan - Dec 1892	M365 Jan - Dec 1903	M380 Jan - Dec 1914	
M272 Jun - Oct 1866	M283 Jan - Sep 1871	M340 Jan - Dec 1882	M353 Jan - Dec 1893	M370 Jan - Dec 1904	M381 Jan - Dec 1915	
M273 Nov 1866-Jan 67	M284 Sep 1871 - Jul 72	M342 Jan - Dec 1883	M354 Jan - Dec 1894	M371 Jan - Dec 1905	M382 Jan - Dec 1916	
M274 Jan - Apr 1867	M323 Aug 1872 - Jul 73	M343 Jan - Dec 1884	M355 Jan - Dec 1895	M368 Jan - Dec 1906	M383 Jan - Dec 1917	

GER Stores, Locomotive & Permanent Way Committee: M112 1864-5

M113 1865-6

GER Way & Works Committee:

M116 1866-7	M119 1870	M142 1889-91	M145 1895-8	M148 1903-04	M153 1910-12	M467 1868 (£2)
M117 Jan-Aug 1868	M120 1871	M143 1891-3	M146 1898-1900	M149 1905-06	M154 1913-17	M468 1868-9 (£2)
M114 1869	M138 1886-7	M144 1893-4	M147 1900-02	M150 1907-09	M155 1918-22	

GER Traffic Committee:

M391 Aug-Oct 1862	M410 Oct-Dec 1864	M476 Feb-Dec 1868 (£1)	M490 Nov72-Apr73 (£2)	M500 All 1880 (£2)	M511 All 1892 (£1.50)	M521 All 1907-8 (£2)
M392 Oct-Dec 1862	M413 Jan-Mar 1865	M477 Jan-Oct 1869 (£2)	M491 Apr-Aug1873 (£2)	M502 All 1881 (£1.50)	M512 All 1893 (£1.50)	M522 All 1909-10 (£2)
M396 Jan-Mar 1863	M415 Apr-Jun 1865	M478 Nov69-Apr70 (£2)	M492 Sep73-Mar74 (£2)	M503 All 1882 (£1.50)	M513 All 1894 (£1.50)	M523 All 1911 (£1.50)
M397 Apr-Jun 1863	M416 Jul-Sep 1865	M479 Apr-Sep1870 (£2)	M493 Apr-Dec1874 (£2)	M504 All 1883 (£1.50)	M514 All 1895-6 (£2)	M524 All 1912 (£1.50)
M398 Jul-Sep 1863	M419 Oct-Dec 1865	M482 Sep70-Jan71 (£2)	M495 All 1875 (£1.50)	M505 All 1884 (£1.50)	M515 All 1897-8 (£2)	M525 All 1913 (£1.50)
M399 Oct-Dec 1863	M469 Jan-Jul 1866 (£2)	M483 Feb-Sep1871 (£2)	M496 All 1876 (£1.50)	M506 All 1885-6 (£2)	M517 All 1899-1900 (£2)	M526 All 1914 (£1)
M404 Jan-Mar 1864	M470 Jul1866-Jan67 (£2)	M484 Sep71-Jan72 (£2)	M497 All 1877 (£1.50)	M507 All 1887-8 (£2)	M518 All 1901-2 (£1.50)	M527 All 1915-17 (£2)
M408 Apr-Jun 1864	M471 Feb-Jun 1867 (£2)	M485 Jan-Jul1872 (£2)	M498 All 1878 (£1.50)	M508 Jan89-Jun90 (£2)	M519 All 1903-4 (£2)	M528 All 1918-20 (£2)
M409 Jul-Sep 1864	M472 Jun-Nov 1867 (£2)	M489 Jul-Nov1872 (£2)	M499 All 1879 (£2)	M509 Jul90-Dec91 (£2)	M520 All 1905-6 (£2)	M529 All 1921-22 (£2)

GER Executive Committee:

M473 Oct1867-Jan68 (£1)

Norfolk & Suffolk Joint Committee:

M225 Nov 1898-Nov 1902

M226 Feb 1903-May 1913

M227 Nov 1913-Nov 1929

Norfolk & Suffolk Joint Committee & Officers' Conference:

M228 Jan 1899-Apr 1928

M229 Jan 1899-Oct 1910

Tottenham and Hampstead Junction Railway: M533 Joint Committee 1885-1929 £2.00 **NEW**

SAMPLE MINUTES SUMARIES [From GER Traffic Committee, 8 November 1865]:-

- MEMORIALS: The Rev. Boyd asks permission to install a collecting box at Tidal Basin and Custom House Station for funds for an infant school; declined.
- WORKS: Gatehouse to be erected at Gissing Level Crossing near Burston.
- THAMES IRON WORKS COMPANY: to avoid risk GERY had been providing a man to attend at Carter's Level Crossing near Barking Rd. Station, much used by the Coy.; GERY will now supply a man for £50pa; agreed.

The Victorians: As part of the Society's educational programme, we are publishing a teaching package aimed at Year 6 in schools. It uses extracts from our summaries of ECR and GER Minutes to offer glimpses of life and society in Victorian times. If you wish for more details on behalf of an interested school, please contact Barry Jackson. It has already been discovered that individuals might also find the material of interest. Members may therefore purchase their own copy of the pupils' book and of the teachers' notes for personal reading. The price is £4.60 plus the appropriate P&P.

7. GUIDES, OS PLANS & DIAGRAMMATIC MAPS

- The P- & V-series are A4-sized extracts from original OS plans, usually from surveys made some time between 1870 and 1926. All are on the 'Maps & Plans' CD (Section 13).

M115	1.70	GER Stratford Works Guide 1900 (Works description inc. plans & locomotive diagrams)	P116	1.20	OS Plans: Fenchurch St.- Blackwall & N. Greenwich
M175	1.60	ECR 1839 Guide (<i>GER reprint</i>)	P117	1.40	OS Plans: Loughton, Ongar & Fairlop Lines
M260	6.40	ECR 1851 Illustrated Guide (<i>GER reprint</i>)	P118	2.50	OS Plans: Norwich - Yarmouth & Lowestoft
M287	1.60	GER East Coast Watering Places. Fares & Summer Train Services 1882	P119	2.00	OS Plans: Ipswich to Felixstowe Pier
P100	1.80	Clacton, Walton & Brightlingsea Branch Stations 25" OS	P120	2.50	OS Plans: Waveney Valley branch
P101	1.50	Railways in Gt. Yarmouth Area (GE/M&GN/N&S) 25" OS			<i>A list of the stations whose plans are included in V1 to V11 below is available free from the Publications Sales Officer on receipt of an SAE.</i>
P102	2.60	N. Woolwich, Gallions & Beckton Lines 6", 25" & 50" OS	V1	1.20	Society Visit September 1982. Includes O.S. plans of eleven railway sites in Essex and Suffolk
P103	2.50	Broxbourne & Hertford: R. Stephenson & OS Plans	V2	1.20	Society Visit September 1983. Includes O.S. plans of 25 railway sites in Herts, Essex, Suffolk & Cambs.
P104	1.90	GER London Goods Depots: OS Plans	V3	2.00	Tending Hundred Railway Tour September 1985. Similar to P100 plus illustrations & chronology.
P105	1.70	GN/GE Jt. Railway: OS Plans Part 1: Lincoln-Doncaster	V4	1.50	Central Line Tour April 1986. Similar to P117 plus itinerary & LT track plan
P106	2.00	GN/GE Jt. Railway: OS Plans Part 2: March-Lincoln	V5	2.50	The BROADSMAN Tour September 1986. Similar to P118 plus itinerary etc.
P107	1.50	GN/GE Jt. Railway: OS Plans Part 3: March-St Ives-Huntingdon & Ramsey Lines (<i>P105/6/7: £4.50 per set</i>)	V6	2.00	The FENMAN Tour September 1987. Includes OS plans of 11 railway sites in Cambridgeshire, Suffolk & Norfolk, Chronology etc.
P108	1.40	LTSR: OS Plans Part 1: Fenchurch St.- Barking incl.	V7	2.00	The NORFOLK COAST EXPRESS Tour September 1988. Includes OS plans from selected stations Thetford - Wymondham - County School & Sheringham M&GN
P109	2.30	LTSR: OS Plans Part 2: Barking (excl.) - Romford, Upminster & Tilbury (incl.)	V8	1.90	Mystery Tour September 1990. Includes OS plans of 14 Norfolk station sites.
P110	2.40	LTSR: OS Plans Part 3: Upminster & Tilbury (excl.) - Shoeburyness & Thames Haven (<i>P108/9/10: £5.50 per set</i>)	V9	2.20	'The Eastern Belle' Tour of Suffolk and Essex September 1989
P111	1.60	Tottenham & Hampstead Jt/Tottenham & Forest Gate Railways: OS Plans	V10	2.00	'The East Essex Enterprise' Tour of Southend area September 1991
P112	0.60	Diagrammatic Map: Fenchurch St-Tilbury & Shoeburyness (circa 1927). Layout, Boxes, Mileages, Gradients etc.	V11	1.10	Stratford Market and Docklands Light Railway Tour January 1991
P113	2.00	OS Plans: East Suffolk Line			
P114	0.50	Diagrammatic Maps (1946): Upper Holloway - S. Tottenham - Barking, Stratford & Docks. Layout, Boxes, Mileages, Gradients etc.			
P115	2.00	OS Plans: Railways in Norwich Area			

8a. Dxx PLANS & DRAWINGS (A4 sized)

- On these drawings no single image exceeds A4 size. The original drawings have therefore been scanned and reproduced as a set of A4 pages. We have been able to reduce the price in consequence. Normal postage applies - there is no need to roll them.

D2	0.80	Chelmsford (ECR) Stn. Plans	D12	1.00	Maldon East Signal Box Plans
D3	1.00	Chelmsford Goods Office (<i>new format Oct 2008</i>)	D15	1.00	Saffron Walden Loco Shed Plans
D4	0.20	Chelmsford Station Water Tower Plan	D16	1.00	Stow-Cum-Quy Station Plans
D5	0.20	Chelmsford Gds Yd Weigh-Bridge Office Plan	D18	1.00	Takeley: Station Buildings Plans
D6	1.00	Cressing Station Plans	D19	1.00	Thaxted Water Tower & Loco Shed Plans
D10a	0.60	Hertford East Station: drawings (originally 4mm scale, but reduced in size) and photos of details, from Journals 7, 8 and 19.	D21	1.00	Walton Loco Shed, Signal Box, Goods Shed & Track Plans

8b. Dxx PLANS & DRAWINGS (large sized)

- These can no longer be posted, so if you wish for a full-size paper copy you should purchase the CD. It contains a scan suitable for you to take to a local printer or copy shop to request a print-out. The approximate size of that print-out is given for guidance in the list below.
- The CD also contains a smaller version of that file, labelled 'For home viewing'. This is ideal for inspecting on a monitor screen and zooming in on a chosen portion to see all the detail. If this is all you need, it will be much cheaper to download that from the Files Emporium - every 'viewing file' is there.

			Size (ins)			Size (ins)	
D1.CD	2.00	BR(E) Loco Route Availability Map 1948	26x29	D20.CD	2.00	Tottenham - Cheshunt composite map including Enfield Town, Palace Gates, Churchbury & Industrial Lines	19x28
D7.CD	2.00	Cromer High loco shed plan (1952)	20x29	D22.CD	2.00	Walton: station building plans	23x33
D8 .CD	2.00	Framlingham Track Plan	15x28	D23.CD	1.50	Wickham Bishops: Trestle Bridge plans	19x23
D10.CD	5.00	Hertford East station plans 3 sheets <i>[See also D10a in Section 8a above]</i>	one 24x52, two 24x34	D33.CD	2.00	GER 'Claud Hamilton' original version, oil burning details. LHS view engine & tender; front view engine	11x48
D11.CD	3.00	LNER (GE) Suburban diagrammatic map 1928	33x36	D34.CD	3.00	Sudbury station in drawings and photos. The main drawing at 4mm scale will print out at A2 size.	
D13.CD	5.00	Maldon East station plans 3 sheets	each 23x33	D35.CD	5.00	Southminster in drawings & photos - the station (A1 size), Station Hotel (A1), a pair of railway cottages (A3) and the goods shed (A4).	
D14.CD	3.00	M&GN Jt Railway: diagrammatic map of system	22x32				
D17.CD	1.60	Stratford GER c1915: plan of complex	16x23				

9. JOHN GARDNER DRAWINGS

- A series of A3-size drawings at an approximate scale of 3/8" to 1 foot are now available as the 'Lxx' series, which are supplied with an accompanying set of notes. A few of the original 'Dxx' series are still available.
- The drawings in this section are also all available on a CD-ROM for printing out on to A4 paper at 4mm & 7mm scales or as an A4 image - see JG.CD in the software section.

D29	0.80	GER S56 0-6-0T No. 87. Please specify 4mm scale, A4 size (larger, to fill page) or 7mm scale (on 2 overlapping A4 pages)	D32	1.00	GER 28ft Third-Class Bogie Tramcar No.8 of 1884 of the Wisbech & Upwell Tramway. Please specify 4mm (one A4 page) or 7mm (two overlapping A4 pages).
D31	1.00	GER Third-Class Tramcar No. 212 of 1905 for Kelvedon & Tollesbury Branch. Please specify 4mm or 7mm, both supplied on a single A4 sheet.			

'Lxx' Series LOCOMOTIVE DRAWINGS (£2.00 each unless otherwise indicated)

- All A3 in size. Apart from L5, L37 & L62 they are to the uniform scale of 3/8 inch to 1 foot. Dimensions are fully marked.
- Unless requested otherwise the drawings will be supplied folded to A4 size in a stiff-backed envelope, but if you prefer it the Lxx drawings (but **not** the Dxx ones) can be supplied rolled in a postal tube for an extra £1.50.

L1	GER 0-4-0 tram engine class G15 no.132 (LNER class Y6).	L16	GER class B74 0-4-0T LNER no.7227.
L2, L3 and L5	L2 is GER 'Coffee Pot' no.209 as built 1874; L3 is GER 'Coffee Pot' no. 226, later LNER class Y5; and L5 (to a scale of 7mm = 1 ft) shows the class variations and liveries. <i>[Special price for the set of L2, L3 and L5: £4.50]</i>	L17	GER class B77 0-4-0T LNER no.7228 variations (cut-down version of B74), plus details of motion of both engines. <i>[L16 and L17 can be supplied together at the special price of £3.50 for the pair.]</i>
L9, L10 and L11	These cover the GER 2-4-2T "Radial" tanks. L9 shows GER No.109E in late GE condition. L10 depicts a GER G69 as built 1911 (no.67) and an F5 in early BR days (no.67216). L11 gives the end views for the engines and cab interior detail for F4/F5 in final condition. <i>[Special price for the set of L9, L10 and L11: £5.00]</i>	L18	GER 0-6-0T class E22, shown as LNER class J65 (no.7155). <i>[See also L57]</i>
		L20	GER class G58 0-6-0 non-superheater no.1235 (LNER class J17)
		L21	Details covering the superheater version of class J17 (No.65545), and of the between-frames motion of both types. <i>[L20 and L21 can be supplied together at the special price of £3.50 for the pair. See also L44.]</i>

- L22 and L23 GER '1500' 4-6-0 class S69 no.1527 sheets 1 and 2.]
- L26 GER H88 (LNER D16/2) 4-4-0 [Special add-on price of £1.50 if bought with L40-41 or L63-4. which show details not dimensioned here]
- L35 and L36 LNER B12/3 rebuilt GER '1500' 4-6-0 sheets 1 and 2. [Special prices: L22+L23 £3.50; L35+L36 £3.50; L22+L23+L35+L36 £6.00. See also L37 below.]
- L37 Enlarged drawings of the front bogie for classes S69 and B12/3. [Priced at £1.50 on its own, or at £1.00 if ordered with either L22 and 23, or L35 and L36.]
- L24 GER 0-6-0T class B26 shunting, as running c.1925 (LNER no.7014, class J67)
- L25 GER 0-6-0T class R24 1180 gall. tank no.165, as rebuilt 1912 (later LNER class J69). [L24 and L25 can be supplied together at the special price of £3.50 for the pair. See also L45 and L56.]
- L39 GER Y14 0-6-0 (nos.37-41, 119-124, 592-599) in c.1923 condition (LNER class J15).
- L40 GER '1800' 4-4-0 as rebuilt to LNER class D16/3 (slide valve engine with 'D&J' boiler), sheet 1.
- L41 As L40, sheet 2. (See also L72)
- [L40 and L41 can be supplied together at the special price of £3.50 for the pair.]
- L42 and L43 GER 0-6-0 class D81 (LNER class J20), sheets 1 and 2. [L42 and L43 can be supplied together at the special price of £3.50 for the pair.]
- L44 GER class F48 and L52 0-6-0 with round-top boiler (LNER class J16). Shows the variations from the G58 class - L20 and L21 have the full details. [Special add-on price of £1.50 if purchased with those sheets.]
- L45 GER 0-6-0T class C72, as LNER class J68 no.7041. All detail not shown is the same as L25. [Special add-on price of £1.50 if bought with L25.]
- L50 and L51 GER 4-4-0 class T19rbt (superheated), LNER class D13 c.1925. [Special price of £3.50 for the pair.]

- L56 J68 0-6-0T (GER class G75) goods tank engine c.1923. [To be read in conjunction with sheet L45. Special add-on price of £1.50 if bought with L45, or £1.00 if bought with both L25 and L45.]
- L57 GER 0-6-0T class B32 (LNER class J65) Nos. 245-254. [To be read in conjunction with sheet L18. Special add-on price of £1.50 if bought with L18.]
- L58 and L59 GER 0-4-4T class E10. [Special price of £3.50 for the pair.]
- L60 and L61 GER 0-6-2T class K85 (LNER class N7) c. 1923. [Special price of £3.50 for the pair.]
- L62 Enlarged details of the K85 / N7. [£1.50 on its own, or £1.00 if purchased with L60 and L61.]
- L63 and L64 GER 4-4-0 class D56, built 1903-1911 (LNER class D15). [Special price of £3.50 for the pair.]
- L66 ECR Sinclair 2-4-0 class 'Y' Nos. 307 to 326, built 1859-60.
- L69 and L70 GER 0-6-0 class T77 (LNER class J19). [Special price of £3.50 for the pair.]
- L71 GER 0-6-0 classes E72 and T77 rebuilt with 'D&J' boiler to LNER class J19/2. To be read in conjunction with drawings L69 and L70 for detail not shown. [Special add-on price of £1.50 if bought with L69 and L70]
- L72 GER 4-4-0 class H88 rebuilt to LNER class D16/3 with 'D&J' boiler to drawing 29803. Frames, wheels, motion, brake gear, etc., and detail not shown are the same as on drawings L40 and L41. [Special add-on price of £1.50 if bought with L40 and L41]
- The following three drawings give extra frame and wheel details for certain of the locomotives above. They are priced at £1.50, or at a special add-on price of £1.00 if you buy or have bought one of the loco drawings they relate to.
- L73 Frames, brake gear and wheel details for J17 (drawings L20 & L21).
- L74 Frames, brake gear and wheel details for LNER J67-69.
- L75 Frame, wheel and motion details for Y4 (drawings L16 & L17).
- L76 Frames, brake gear and wheel details for GER Y14 (LNER J15)
- L77 Frames, brake gear and wheel details for LNER F4-5 2-4-2T

'Lxx' Series TENDER DRAWINGS (3/8 inch to 1 foot scale)

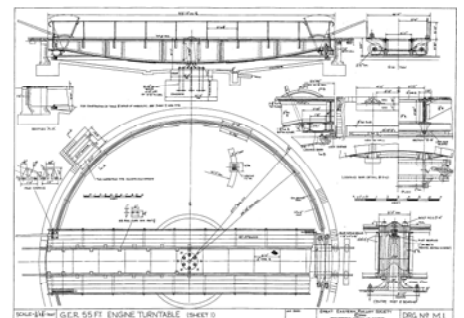
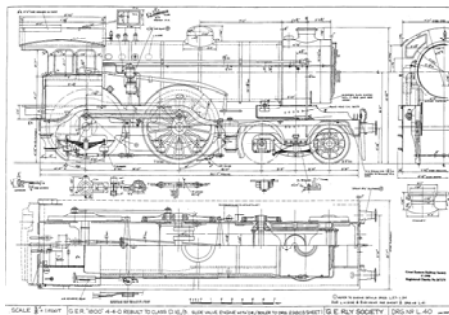
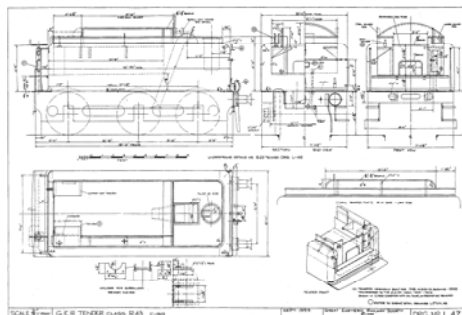
- £2.00 each, or £3.50 for L46 and L47 together. If purchased with drawing of an appropriate locomotive deduct £0.50 from these prices.
- L19 GER 3450 gallon tender. The one shown is typical for D14, D15 and D16, with Westinghouse brake and water scoop air operated. Detail variations are described and/or shown for J17, J18, J19, J20, D16/3 and B12 (GE-built engines).
- L38 Worsdell 2755 gallon tender GER class Z14, fitted to Y14 engines no.37-41, 119-124, 592-599.
- L46 GER 2640 gallon standard tender 'S23', as fitted to GER classes T19, D27 and P43 (coal-burning engines), and to LNER classes D13, E4, J14, J15 and J17.
- L47 GER 'R24' tender, built originally for the P43 oil-burners, transferred in 1902 to T19s no.1020-9. It is shown in 1923 condition, with oil tank and water scoop removed. For underframe details see L46.
- L65 GER tender for Sinclair classes 'W' and 'Y'.

'Lxx' Series LOCOMOTIVE AND TENDER DETAILS DRAWINGS

- These show enlarged details of fittings common to many classes of engines - whistles, tool-boxes, buffers and the like. These items are identified on the individual engine and tender drawings by numbers in circles: those numbers refer to the numbers (from 1 to 67) given in the lists below.
 - Any one or two £1.50 each; 3 to 5 £1.30 each; 6 or 7 £1.20 each; 8 or 9 £1.10 each; 10 or more £1.00 each.
- L27 (1) Standard safety valve casing. (2) Standard whistle. (3) Standard boiler clackbox. (4) Safety valve casing - 4-column valves. (5) Blow-off cock. (6) Tank filler lid.
- L28 (7) Buffer, 1882. (8) Buffer for passenger engines and tenders, 1919. (9) Round window for cab. (10) Protector for back cab windows. (11) Standard blower. (12) Standard frame end. (13) Tool box. (14) Standard engine and tender screw coupler. (15) Smokebox door dart and handles.
- L29 (16) Disc, destination board and brackets. (17) Alternative destination board bracket (18) Various lamp irons, disc brackets and disc holder. (19) 3-link coupling 1923 - group standard. (20) GE pattern cast iron engine brake block. (21) LNER standard brake block. (22) LNER group standard buffer. (23) Typical handrail pillars. (24) Brass boiler coping (25) Westinghouse pump exhaust elbow. (26) Cab surround. (27) Handrails. (28) Wood cab roof.
- L30 (29) Driver's small air brake valve. (30) No.4 driver's valve (Westinghouse). (31) Standard steam brake valve (to c.1931). (32) Train pipe air brake pressure gauge. (33) Reservoir pressure gauge. (34) Gresham no.40 combination ejector type C.
- L31 (35) 8"/8½" air pump. (36) Westinghouse train pipe. (37) Pump governor no.6. (38) Ball lubricator. (39) 6"/6½" air pump. (40) Typical arrangement of governor and drain pipes 6"/6½" pump, J65-69. (41) Vacuum and Westinghouse pipe positions.
- L32 (42) Firehole door (E4,F3,J15,J65-67: no lagging on backplate). (43) Firehole door (S69, D56, S46, T19rbt, Y65, G69, C72, L77, E72, G58, F48, B74: engines with lagged backplate). (44) Standard injector steam cock. (45) Injector steam cock, Belpaire boilers. (46) Water gauge columns, Dewrance patent. (47) to (49) Regulator stuffing box and details for various (specified) classes.
- L33 (50) Reversing gear, Westinghouse-fitted engines (R24rbt,S56,C72, LNER J68-69). (51) Reversing lever class T18 (J66-69 steam brake engines, also Y4 with minor changes). (52) Leading sand-box and details, J66-69. (53) Details of condensing apparatus for class R24 engines.
- L48 (54) Tender axle-box and spring. (55) Fire iron holders. (56) Tender rail guard. (57), (58) Handbrake columns, small and large. (59) Water scoop air valve. (60) Cast iron plate for tenders.
- L49 (61) Smokebox door D13-16,B12,N7. (62) SB door J17-20. (63) SB door F4-6,J65-69,Y4,G4. (64) SB door E4,F3,J14,J15. (65) N7 snifting valve. (66) GER vacuum exhaust elbow. (67) Clips for smokebox doors.
- L52 GER Schmidt and Robinson superheater damper gear and draught retarder.
- L53 Engine details 68 to 76 - chimneys and domes.
- L54 Large engine numerals and number plates.
- L55 Weatherboards for Z14 and S23 tenders.

OTHER 'Lxx' Series DRAWINGS

- M1 and M2 GER 55-foot engine turntable. [Special price of £3.50 for the pair.]



Above: Much reduced copies of some of the John Gardner drawings taken from the CD-ROM

10. TIMETABLES

T100 3.30 GE/LTS Timetables Jan 1921 (*Bradshaw reprint*)
 T101 1.90 GE/LTS Timetables Nov 1889 (*Bradshaw reprint*)
 T102 0.90 GE/LTS Timetables Aug 1862 (*Bradshaw reprint*)
 T103 1.30 Mid-Suffolk Light Railway: WTT 1919 /21/22
 T104 1.30 ECR etc. Timetables May 1849 (*Bradshaw reprint*)
 T105 3.20 GER/LTS/M&GN Timetables Apr 1905 (*Bradshaw reprint*)
 T106 3.90 LNER (GE Sect), LMS (LTS Sect) & M&GN Timetables Oct 1931 (*Bradshaw reprint*)

T107 2.80 LNER Emergency Timetable: 1939 Suburban Services, Liverpool St. & Fenchurch St.
 Colne Valley WTTs: 1922-3 [*re-typed*]
 T109 3.50 GER/LTS/M&GN Timetables Oct 1917 (*Bradshaw reprint*)
 T110 0.30 ECR/L&BR/N&ER Fares & Timetables (1842 – *Robinson's reprint*)
 T111 2.70 ECR etc. Timetables June 1853 (*Truscott's reprint*)
 T112 4.80 GER Timetables: Reprint Mar 1882 Part 1
 T113 4.40 GER Timetables: Reprint Mar 1882 Part 2
 T114 2.60 GN&GE Jt. Railway. WTTs Nov 1895
 T115 3.10 LTSR WTTs (Passenger, LMS period)
 T116 4.00 LNER (GE Sect) Timetable Sept 1937 Part 1
 T117 4.10 LNER (GE Sect) Timetable Sept 1937 Part 2
 T118 2.00 LNER Emergency Timetables 1939 (excluding Suburban)
 T119 11.20 GER WTT: Cambridge & Colchester Main Line & Branches 1913
 T120 2.80 GN & GE Jt Railway WTTs July 1900
 T121 1.10 ECR Timetable, May 1851
 T122 4.50 Appendix to WTT & Rule Book LTS Line 1960
 T123 2.80 Weekly WTT Special Passenger Trains February 1913
 T124 3.60 LNER (GE/LTS/M&GN etc.) Bradshaw Extracts June-July 1933
 T125 4.20 Thew & Son's 1920 Eastern Counties Railway Guide. Passenger TT for GE, GN&GE, M&GN & LNWR Bletchley line
 T126 1.90 ECR Staff TT 1856 (Reprint by GER 1898)

T127 5.90 BR (ER) Section K 1960 WTT Passenger & Freight Trains. Cambridge & Colchester Intermediate Branches (Bury, Thetford & Swaffham. Cambridge to Haughley & to Mildenhall. Colchester to Bury & Cambridge. Norwich to King's Lynn, Wells & Foulsham)

T128 3.00 Bradshaw Oct 1947. The GE main lines from Liverpool St to Norwich via Cambridge and via Ipswich, and the East Suffolk line from Ipswich to Yarmouth South Town. Also shown are the ex-GN route from Cambridge to London, the GN&GE Joint line and the entire M&GN system.

T129 3.50 Bradshaw Oct 1947. All the GE branches outside London (apart from the Shenfield to Southend line, in T130 to compare with the competing LT&SR tables). Also shown are the Norfolk and Suffolk Joint lines and the LMS links to Cambridge and to Peterborough East.

T130 3.00 Bradshaw Oct 1947. The complete LT&S section of the LMS, as well as all the GE suburban lines (together with the Shenfield to Southend branch). The GN line to Hertford (North) has been added. Summaries of the LT services (including the East London line) also appear here.

T131 3.80 Introductory timetable for the NE London electrified services November 1960 (to Chingford, Enfield Town, Hertford East and Bishops Stortford). [*Also available on CD for £2.50*]

T132 3.00 GER Working Timetables, June 1863. [*Also on CD for the same price*]
 T133 2.00 LTSR Working timetables, September 1882.
 T134 2.50 M&GN Working Timetables July 1927. Includes the Norfolk & Suffolk Joint lines and the goods line from Yarmouth Beach to the White Swan Yard. [*Also on MTT.CD*]

T135 2.00 M&GN Working Timetables July 1903. This coincided with the opening of the Norfolk & Suffolk Joint line to Lowestoft. [*Also on MTT.CD*]

T136 2.50 GN&GE Appendix to Rules & Regulations and to the WTT February 1913.
 T137 1.20 Timings of trains passing through Cambridge. LNER summer 1934.
 T138 2.00 Timings of trains around Norwich Thorpe. LNER summer 1938.
 T139 1.50 East Anglian branch line timetables, summer 1960.

11. SIGNALLING

• See also M417 in Section 4.

S100 1.00 GER Way & Works Minutes: Summary of Signalling Items 1900-1922
 S101 0.40 LNER Notice: New Signalling Shenfield- Ingatestone (1937)
 S102 0.80 LNER Notice: New Signalling Ingatestone-Chelmsford (1937)
 S103 0.80 GER Way & Works Minutes: Summary of Signalling Items 1880-1884
 S104 0.80 GER Way & Works Minutes: Summary of Signalling Items 1884-1889 [*S100, S103 and S104 are also available combined on a word-searchable CD-ROM. See Section 13 (Software).*]

S105 1.80 New Signalling: Chadwell Heath-Gidea Park (1949)
 S106 1.40 New Signalling: Ilford-Goodmayes (1949)
 S107 0.30 GER Signalling Alterations: Liverpool St-Hackney Downs (April 1920)
 S108 1.50 Signalling Diagrams from C. S. King's Notebooks: Stratford, Tottenham, Blackwall & Hackney Downs (see also S127)
 S109 1.30 Signal & Point Lever Frames, GE Sect.
 S110 0.70 Fenchurch St. resignalling (1935)
 S111 0.50 Signalling Regulations Norfolk Rly 1847
 S112 1.20 Signal & Gradient Diagram Temple Mills-Gospel Oak (BR)
 S113 1.00 Colour Light Signalling Wickford-Southend (1938)
 S114 0.90 Colour Light Signalling Billericay-Wickford (1938)
 S115 2.30 New Signalling Seven Kings-Chadwell Heath (1949)
 S116 2.10 New Signalling Bow Junction-Stratford (1949)

S117 2.20 New Signalling Forest Gate-Ilford Car Sheds (1949)
 S118 2.50 New Signalling Maryland-Manor Park (1949)
 S119 2.70 New Signalling at Liverpool St (1949)
 S120 2.40 New Signalling Liverpool St-Bow Junction (1949)
 S121 2.00 Signalling Instructions Loughton-Epping 1949
 S122 3.00 1950 BR Reprint of 1935 LNER Regulations for Single Lines
 S123 6.20 Compendium of Signal Box Openings etc BR(ER-GE) 1961
 S124 0.50 New Signalling Chelmsford-Witham BR(ER) 1961
 S125 1.10 NSE 1992 Alterations to Signalling etc in Ely Area
 S126 0.90 NSE 1992 Alterations to Signalling Wickford-Southminster
 S127 1.10 Further Sketches from Charles King's Notebooks covering Stratford, Poplar, Bethnal Green & Seven Sisters (see also S108)
 S128 1.70 Signalling Alterations Cambridge Station Area 1982
 S129 0.80 Electro-Pneumatic Signalling Cabin at Spitalfields, from *Railway Magazine* Aug 1899

S130 2.00 Colour light signalling on the Chingford branch 1938 – the LNER official Notice and an article from the *Railway Gazette*.

S131 1.50 Automatic colour light signalling Bethnal Green East Jcn to Hackney Downs. LNER Notice No.2812, November 1935.
 S132 1.50 Resignalling Ipswich station and approaches, 1984

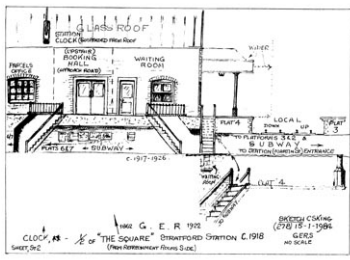
12. BINDERS & VIDEO DVDS

A7 13.00 Binders (boxed pair). Specially produced A4 'Cordex' binders in royal blue with 18 spring-tensioned cords, 'marble' lining papers and rigid gold-blocked spines.

GL1 1.00 Gold labels for binder spines. There are 20 such labels on a sheet. Twelve of these are devoted to possible upper labels (five for the Journal, five for the News and two more general ones that just say 'Great Eastern Railway Society', each incorporating a batswing emblem). The other eight may be cut to provide a selection of 24 alternative lower titles. These cover the range from 'Volume 10' to 'Volume 21' and 'Nos. 91-100' up to 'Nos. 201-210'.

GL2 1.50 A sheet which contains your personal choice of printed gold labels. These might include the earlier volumes, for example. If you fit more than ten Journals into a binder, then you might need something like 'Nos. 118-131'. It can be done. If you want more copies of the general GERS upper label plus lower ones which read 'Minutes', etc., just say so. Non-GERS titles can also be supplied (such as 'Steam Days', or even 'The Beano!'). Remember there are 20 labels on a sheet. Each upper title requires a single label to itself, but you can fit three of the lower titles on one label. Since it will take a while to compile your sheet for you, please allow a few extra days before you receive it.

- VIDEO DVDS**
- The only DVD we issue suitable for playing at home is Bernard Walsh's 8mm films (section 13). Unfortunately it has become uneconomic for us to stock commercial videos any more. They remain available via normal trade outlets, however, and prices on Amazon are currently lower than we could have supplied them for.
 - We produced our own programme notes to accompany each DVD. These can still be supplied free of charge if you should wish for a copy. They can be added to an order, sent on receipt of a SAE, or returned as an attachment in response to an e-mail. Please state which DVD you are interested in.
 - Those videos are:-
 - A15 Railways of East Anglia 1900 - 1980s. [*East Anglian Film Archive*].
 - A16 Railways to Nowhere - Branch Line to Laxfield.
 - A17 The Lost Railways of East Anglia. [*East Anglian Film Archive*].
 - A18 East Anglia's Steam Years. [*East Anglian Film Archive*].



(left) A page from S127 – sketches by the late Charles King.

(right) From L123 – logs of journeys over GE lines between 1941 and 1947 (Section 5, page 2).

(In the Files Emporium on our web site, every single item is accompanied by a thumbnail illustration like these ones.)

TABLE 1. Log of journeys on the LNER from 1941 to 1947

COMMENTARY ON RUNS

Early here is a run on the 8.45pm Colchester and Harwich express from Shenfield, which gave me the feeling of a London train and was excellent. It was a packed and heavy train which left 12 minutes late, and by excellent running arrived a quarter of a minute early, chiefly by reason of the fast start and a sustained 60 mph to Strat.

Now two repeat runs during the 'King's Notebooks' period on the GE Main Line are well worthy of inclusion. The first and only such fast passenger train, and the only one through Colne Park is distinctly really faster at 60 mph or over.

The 8.45pm train from Ipswich was an excellent effort with a set time of 25½ minutes to Stratford and speeds of 50 mph between Stratford and Ipswich. 30% high down the bank, 42 through Colne Park – most excellent – and 50% high down the bank to Stratford.

I was very lucky to find one more repeat early run on the 8.45pm Colchester and Harwich express from Shenfield, which gave me the feeling of a London train and was excellent. It was a packed and heavy train which left 12 minutes late, and by excellent running arrived a quarter of a minute early, chiefly by reason of the fast start and a sustained 60 mph to Strat.

Now two repeat runs during the 'King's Notebooks' period on the GE Main Line are well worthy of inclusion. The first and only such fast passenger train, and the only one through Colne Park is distinctly really faster at 60 mph or over.

The 8.45pm train from Ipswich was an excellent effort with a set time of 25½ minutes to Stratford and speeds of 50 mph between Stratford and Ipswich. 30% high down the bank, 42 through Colne Park – most excellent – and 50% high down the bank to Stratford.

I was very lucky to find one more repeat early run on the 8.45pm Colchester and Harwich express from Shenfield, which gave me the feeling of a London train and was excellent. It was a packed and heavy train which left 12 minutes late, and by excellent running arrived a quarter of a minute early, chiefly by reason of the fast start and a sustained 60 mph to Strat.

Now two repeat runs during the 'King's Notebooks' period on the GE Main Line are well worthy of inclusion. The first and only such fast passenger train, and the only one through Colne Park is distinctly really faster at 60 mph or over.

The 8.45pm train from Ipswich was an excellent effort with a set time of 25½ minutes to Stratford and speeds of 50 mph between Stratford and Ipswich. 30% high down the bank, 42 through Colne Park – most excellent – and 50% high down the bank to Stratford.

I was very lucky to find one more repeat early run on the 8.45pm Colchester and Harwich express from Shenfield, which gave me the feeling of a London train and was excellent. It was a packed and heavy train which left 12 minutes late, and by excellent running arrived a quarter of a minute early, chiefly by reason of the fast start and a sustained 60 mph to Strat.

Now two repeat runs during the 'King's Notebooks' period on the GE Main Line are well worthy of inclusion. The first and only such fast passenger train, and the only one through Colne Park is distinctly really faster at 60 mph or over.

The 8.45pm train from Ipswich was an excellent effort with a set time of 25½ minutes to Stratford and speeds of 50 mph between Stratford and Ipswich. 30% high down the bank, 42 through Colne Park – most excellent – and 50% high down the bank to Stratford.

I was very lucky to find one more repeat early run on the 8.45pm Colchester and Harwich express from Shenfield, which gave me the feeling of a London train and was excellent. It was a packed and heavy train which left 12 minutes late, and by excellent running arrived a quarter of a minute early, chiefly by reason of the fast start and a sustained 60 mph to Strat.

Now two repeat runs during the 'King's Notebooks' period on the GE Main Line are well worthy of inclusion. The first and only such fast passenger train, and the only one through Colne Park is distinctly really faster at 60 mph or over.

The 8.45pm train from Ipswich was an excellent effort with a set time of 25½ minutes to Stratford and speeds of 50 mph between Stratford and Ipswich. 30% high down the bank, 42 through Colne Park – most excellent – and 50% high down the bank to Stratford.

I was very lucky to find one more repeat early run on the 8.45pm Colchester and Harwich express from Shenfield, which gave me the feeling of a London train and was excellent. It was a packed and heavy train which left 12 minutes late, and by excellent running arrived a quarter of a minute early, chiefly by reason of the fast start and a sustained 60 mph to Strat.

Now two repeat runs during the 'King's Notebooks' period on the GE Main Line are well worthy of inclusion. The first and only such fast passenger train, and the only one through Colne Park is distinctly really faster at 60 mph or over.

The 8.45pm train from Ipswich was an excellent effort with a set time of 25½ minutes to Stratford and speeds of 50 mph between Stratford and Ipswich. 30% high down the bank, 42 through Colne Park – most excellent – and 50% high down the bank to Stratford.

I was very lucky to find one more repeat early run on the 8.45pm Colchester and Harwich express from Shenfield, which gave me the feeling of a London train and was excellent. It was a packed and heavy train which left 12 minutes late, and by excellent running arrived a quarter of a minute early, chiefly by reason of the fast start and a sustained 60 mph to Strat.

Now two repeat runs during the 'King's Notebooks' period on the GE Main Line are well worthy of inclusion. The first and only such fast passenger train, and the only one through Colne Park is distinctly really faster at 60 mph or over.

The 8.45pm train from Ipswich was an excellent effort with a set time of 25½ minutes to Stratford and speeds of 50 mph between Stratford and Ipswich. 30% high down the bank, 42 through Colne Park – most excellent – and 50% high down the bank to Stratford.

I was very lucky to find one more repeat early run on the 8.45pm Colchester and Harwich express from Shenfield, which gave me the feeling of a London train and was excellent. It was a packed and heavy train which left 12 minutes late, and by excellent running arrived a quarter of a minute early, chiefly by reason of the fast start and a sustained 60 mph to Strat.

Now two repeat runs during the 'King's Notebooks' period on the GE Main Line are well worthy of inclusion. The first and only such fast passenger train, and the only one through Colne Park is distinctly really faster at 60 mph or over.

The 8.45pm train from Ipswich was an excellent effort with a set time of 25½ minutes to Stratford and speeds of 50 mph between Stratford and Ipswich. 30% high down the bank, 42 through Colne Park – most excellent – and 50% high down the bank to Stratford.

I was very lucky to find one more repeat early run on the 8.45pm Colchester and Harwich express from Shenfield, which gave me the feeling of a London train and was excellent. It was a packed and heavy train which left 12 minutes late, and by excellent running arrived a quarter of a minute early, chiefly by reason of the fast start and a sustained 60 mph to Strat.

Now two repeat runs during the 'King's Notebooks' period on the GE Main Line are well worthy of inclusion. The first and only such fast passenger train, and the only one through Colne Park is distinctly really faster at 60 mph or over.

The 8.45pm train from Ipswich was an excellent effort with a set time of 25½ minutes to Stratford and speeds of 50 mph between Stratford and Ipswich. 30% high down the bank, 42 through Colne Park – most excellent – and 50% high down the bank to Stratford.

I was very lucky to find one more repeat early run on the 8.45pm Colchester and Harwich express from Shenfield, which gave me the feeling of a London train and was excellent. It was a packed and heavy train which left 12 minutes late, and by excellent running arrived a quarter of a minute early, chiefly by reason of the fast start and a sustained 60 mph to Strat.

Now two repeat runs during the 'King's Notebooks' period on the GE Main Line are well worthy of inclusion. The first and only such fast passenger train, and the only one through Colne Park is distinctly really faster at 60 mph or over.

The 8.45pm train from Ipswich was an excellent effort with a set time of 25½ minutes to Stratford and speeds of 50 mph between Stratford and Ipswich. 30% high down the bank, 42 through Colne Park – most excellent – and 50% high down the bank to Stratford.

I was very lucky to find one more repeat early run on the 8.45pm Colchester and Harwich express from Shenfield, which gave me the feeling of a London train and was excellent. It was a packed and heavy train which left 12 minutes late, and by excellent running arrived a quarter of a minute early, chiefly by reason of the fast start and a sustained 60 mph to Strat.

Now two repeat runs during the 'King's Notebooks' period on the GE Main Line are well worthy of inclusion. The first and only such fast passenger train, and the only one through Colne Park is distinctly really faster at 60 mph or over.

The 8.45pm train from Ipswich was an excellent effort with a set time of 25½ minutes to Stratford and speeds of 50 mph between Stratford and Ipswich. 30% high down the bank, 42 through Colne Park – most excellent – and 50% high down the bank to Stratford.

I was very lucky to find one more repeat early run on the 8.45pm Colchester and Harwich express from Shenfield, which gave me the feeling of a London train and was excellent. It was a packed and heavy train which left 12 minutes late, and by excellent running arrived a quarter of a minute early, chiefly by reason of the fast start and a sustained 60 mph to Strat.

Now two repeat runs during the 'King's Notebooks' period on the GE Main Line are well worthy of inclusion. The first and only such fast passenger train, and the only one through Colne Park is distinctly really faster at 60 mph or over.

The 8.45pm train from Ipswich was an excellent effort with a set time of 25½ minutes to Stratford and speeds of 50 mph between Stratford and Ipswich. 30% high down the bank, 42 through Colne Park – most excellent – and 50% high down the bank to Stratford.

I was very lucky to find one more repeat early run on the 8.45pm Colchester and Harwich express from Shenfield, which gave me the feeling of a London train and was excellent. It was a packed and heavy train which left 12 minutes late, and by excellent running arrived a quarter of a minute early, chiefly by reason of the fast start and a sustained 60 mph to Strat.

Now two repeat runs during the 'King's Notebooks' period on the GE Main Line are well worthy of inclusion. The first and only such fast passenger train, and the only one through Colne Park is distinctly really faster at 60 mph or over.

The 8.45pm train from Ipswich was an excellent effort with a set time of 25½ minutes to Stratford and speeds of 50 mph between Stratford and Ipswich. 30% high down the bank, 42 through Colne Park – most excellent – and 50% high down the bank to Stratford.

I was very lucky to find one more repeat early run on the 8.45pm Colchester and Harwich express from Shenfield, which gave me the feeling of a London train and was excellent. It was a packed and heavy train which left 12 minutes late, and by excellent running arrived a quarter of a minute early, chiefly by reason of the fast start and a sustained 60 mph to Strat.

Now two repeat runs during the 'King's Notebooks' period on the GE Main Line are well worthy of inclusion. The first and only such fast passenger train, and the only one through Colne Park is distinctly really faster at 60 mph or over.

The 8.45pm train from Ipswich was an excellent effort with a set time of 25½ minutes to Stratford and speeds of 50 mph between Stratford and Ipswich. 30% high down the bank, 42 through Colne Park – most excellent – and 50% high down the bank to Stratford.

I was very lucky to find one more repeat early run on the 8.45pm Colchester and Harwich express from Shenfield, which gave me the feeling of a London train and was excellent. It was a packed and heavy train which left 12 minutes late, and by excellent running arrived a quarter of a minute early, chiefly by reason of the fast start and a sustained 60 mph to Strat.

Now two repeat runs during the 'King's Notebooks' period on the GE Main Line are well worthy of inclusion. The first and only such fast passenger train, and the only one through Colne Park is distinctly really faster at 60 mph or over.

The 8.45pm train from Ipswich was an excellent effort with a set time of 25½ minutes to Stratford and speeds of 50 mph between Stratford and Ipswich. 30% high down the bank, 42 through Colne Park – most excellent – and 50% high down the bank to Stratford.

I was very lucky to find one more repeat early run on the 8.45pm Colchester and Harwich express from Shenfield, which gave me the feeling of a London train and was excellent. It was a packed and heavy train which left 12 minutes late, and by excellent running arrived a quarter of a minute early, chiefly by reason of the fast start and a sustained 60 mph to Strat.

Now two repeat runs during the 'King's Notebooks' period on the GE Main Line are well worthy of inclusion. The first and only such fast passenger train, and the only one through Colne Park is distinctly really faster at 60 mph or over.

The 8.45pm train from Ipswich was an excellent effort with a set time of 25½ minutes to Stratford and speeds of 50 mph between Stratford and Ipswich. 30% high down the bank, 42 through Colne Park – most excellent – and 50% high down the bank to Stratford.

I was very lucky to find one more repeat early run on the 8.45pm Colchester and Harwich express from Shenfield, which gave me the feeling of a London train and was excellent. It was a packed and heavy train which left 12 minutes late, and by excellent running arrived a quarter of a minute early, chiefly by reason of the fast start and a sustained 60 mph to Strat.

Now two repeat runs during the 'King's Notebooks' period on the GE Main Line are well worthy of inclusion. The first and only such fast passenger train, and the only one through Colne Park is distinctly really faster at 60 mph or over.

The 8.45pm train from Ipswich was an excellent effort with a set time of 25½ minutes to Stratford and speeds of 50 mph between Stratford and Ipswich. 30% high down the bank, 42 through Colne Park – most excellent – and 50% high down the bank to Stratford.

I was very lucky to find one more repeat early run on the 8.45pm Colchester and Harwich express from Shenfield, which gave me the feeling of a London train and was excellent. It was a packed and heavy train which left 12 minutes late, and by excellent running arrived a quarter of a minute early, chiefly by reason of the fast start and a sustained 60 mph to Strat.

Now two repeat runs during the 'King's Notebooks' period on the GE Main Line are well worthy of inclusion. The first and only such fast passenger train, and the only one through Colne Park is distinctly really faster at 60 mph or over.

The 8.45pm train from Ipswich was an excellent effort with a set time of 25½ minutes to Stratford and speeds of 50 mph between Stratford and Ipswich. 30% high down the bank, 42 through Colne Park – most excellent – and 50% high down the bank to Stratford.

I was very lucky to find one more repeat early run on the 8.45pm Colchester and Harwich express from Shenfield, which gave me the feeling of a London train and was excellent. It was a packed and heavy train which left 12 minutes late, and by excellent running arrived a quarter of a minute early, chiefly by reason of the fast start and a sustained 60 mph to Strat.

Now two repeat runs during the 'King's Notebooks' period on the GE Main Line are well worthy of inclusion. The first and only such fast passenger train, and the only one through Colne Park is distinctly really faster at 60 mph or over.

The 8.45pm train from Ipswich was an excellent effort with a set time of 25½ minutes to Stratford and speeds of 50 mph between Stratford and Ipswich. 30% high down the bank, 42 through Colne Park – most excellent – and 50% high down the bank to Stratford.

I was very lucky to find one more repeat early run on the 8.45pm Colchester and Harwich express from Shenfield, which gave me the feeling of a London train and was excellent. It was a packed and heavy train which left 12 minutes late, and by excellent running arrived a quarter of a minute early, chiefly by reason of the fast start and a sustained 60 mph to Strat.

Now two repeat runs during the 'King's Notebooks' period on the GE Main Line are well worthy of inclusion. The first and only such fast passenger train, and the only one through Colne Park is distinctly really faster at 60 mph or over.

The 8.45pm train from Ipswich was an excellent effort with a set time of 25½ minutes to Stratford and speeds of 50 mph between Stratford and Ipswich. 30% high down the bank, 42 through Colne Park – most excellent – and 50% high down the bank to Stratford.

I was very lucky to find one more repeat early run on the 8.45pm Colchester and Harwich express from Shenfield, which gave me the feeling of a London train and was excellent. It was a packed and heavy train which left 12 minutes late, and by excellent running arrived a quarter of a minute early, chiefly by reason of the fast start and a sustained 60 mph to Strat.

Now two repeat runs during the 'King's Notebooks' period on the GE Main Line are well worthy of inclusion. The first and only such fast passenger train, and the only one through Colne Park is distinctly really faster at 60 mph or over.

The 8.45pm train from Ipswich was an excellent effort with a set time of 25½ minutes to Stratford and speeds of 50 mph between Stratford and Ipswich. 30% high down the bank, 42 through Colne Park – most excellent – and 50% high down the bank to Stratford.

I was very lucky to find one more repeat early run on the 8.45pm Colchester and Harwich express from Shenfield, which gave me the feeling of a London train and was excellent. It was a packed and heavy train which left 12 minutes late, and by excellent running arrived a quarter of a minute early, chiefly by reason of the fast start and a sustained 60 mph to Strat.

Now two repeat runs during the 'King's Notebooks' period on the GE Main Line are well worthy of inclusion. The first and only such fast passenger train, and the only one through Colne Park is distinctly really faster at 60 mph or over.

The 8.45pm train from Ipswich was an excellent effort with a set time of 25½ minutes to Stratford and speeds of 50 mph between Stratford and Ipswich. 30% high down the bank, 42 through Colne Park – most excellent – and 50% high down the bank to Stratford.

I was very lucky to find one more repeat early run on the 8.45pm Colchester and Harwich express from Shenfield, which gave me the feeling of a London train and was excellent. It was a packed and heavy train which left 12 minutes late, and by excellent running arrived a quarter of a minute early, chiefly by reason of the fast start and a sustained 60 mph to Strat.

Now two repeat runs during the 'King's Notebooks' period on the GE Main Line are well worthy of inclusion. The first and only such fast passenger train, and the only one through Colne Park is distinctly really faster at 60 mph or over.

The 8.45pm train from Ipswich was an excellent effort with a set time of 25½ minutes to Stratford and speeds of 50 mph between Stratford and Ipswich. 30% high down the bank, 42 through Colne Park – most excellent – and 50% high down the bank to Stratford.

I was very lucky to find one more repeat early run on the 8.45pm Colchester and Harwich express from Shenfield, which gave me the feeling of a London train and was excellent. It was a packed and heavy train which left 12 minutes late, and by excellent running arrived a quarter of a minute early, chiefly by reason of the fast start and a sustained 60 mph to Strat.

Now two repeat runs during the 'King's Notebooks' period on the GE Main Line are well worthy of inclusion. The first and only such fast passenger train, and the only one through Colne Park is distinctly really faster at 60 mph or over.

The 8.45pm train from Ipswich was an excellent effort with a set time of 25½ minutes to Stratford and speeds of 50 mph between Stratford and Ipswich. 30% high down the bank, 42 through Colne Park – most excellent – and 50% high down the bank to Stratford.

I was very lucky to find one more repeat early run on the 8.45pm Colchester and Harwich express from Shenfield, which gave me the feeling of a London train and was excellent. It was a packed and heavy train which left 12 minutes late, and by excellent running arrived a quarter of a minute early, chiefly by reason of the fast start and a sustained 60 mph to Strat.

Now two repeat runs during the 'King's Notebooks' period on the GE Main Line are well worthy of inclusion. The first and only such fast passenger train, and the only one through Colne Park is distinctly really faster at 60 mph or over.

The 8.45pm train from Ipswich was an excellent effort with a set time of 25½ minutes to Stratford and speeds of 50 mph between Stratford and Ipswich. 30% high down the bank, 42 through Colne Park – most excellent – and 50% high down the bank to Stratford.

I was very lucky to find one more repeat early run on the 8.45pm Colchester and Harwich express from Shenfield, which gave me the feeling of a London train and was excellent. It was a packed and heavy train which left 12 minutes late, and by excellent running arrived a quarter of a minute early, chiefly by reason of the fast start and a sustained 60 mph to Strat.

Now two repeat runs during the 'King's Notebooks' period on the GE Main Line are well worthy of inclusion. The first and only such fast passenger train, and the only one through Colne Park is distinctly really faster at 60 mph or over.

The 8.45pm train from Ipswich was an excellent effort with a set time of 25½ minutes to Stratford and speeds of 50 mph between Stratford and Ipswich. 30% high down the bank, 42 through Colne Park – most excellent – and 50% high down the bank to Stratford.

I was very lucky to find one more repeat early run on the 8.45pm Colchester and Harwich express from Shenfield, which gave me the feeling of a London train and was excellent. It was a packed and heavy train which left 12 minutes late, and by excellent running arrived a quarter of a minute early, chiefly by reason of the fast start and a sustained 60 mph to Strat.

Now two repeat runs during the 'King's Notebooks' period on the GE Main Line are well worthy of inclusion. The first and only such fast passenger train, and the only one through Colne Park is distinctly really faster at 60 mph or over.

The 8.45pm train from Ipswich was an excellent effort with a set time of 25½ minutes to Stratford and speeds of 50 mph between Stratford and Ipswich. 30% high down the bank, 42 through Colne Park – most excellent – and 50% high down the bank to Stratford.

I was very lucky to find one more repeat early run on the 8.45pm Colchester and Harwich express from Shenfield, which gave me the feeling of a London train and was excellent. It was a packed and heavy train which left 12 minutes late, and by excellent running arrived a quarter of a minute early, chiefly by reason of the fast start and a sustained 60 mph to Strat.

Now two repeat runs during the 'King's Notebooks' period on the GE Main Line are well worthy of inclusion. The first and only such fast passenger train, and the only one through Colne Park is distinctly really faster at 60 mph or over.

The 8.45pm train from Ipswich was an excellent effort with a set time of 25½ minutes to Stratford and speeds of 50 mph between Stratford and Ipswich. 30% high down the bank, 42 through Colne Park – most excellent – and 50% high down the bank to Stratford.

I was very lucky to find one more repeat early run on the 8.45pm Colchester and Harwich express from Shenfield, which gave me the feeling of a London train and was excellent. It was a packed and heavy train which left 12 minutes late, and by excellent running arrived a quarter of a minute early, chiefly by reason of the fast start and a sustained 60 mph to Strat.

Now two repeat runs during the 'King's Notebooks' period on the GE Main Line are well worthy of inclusion. The first and only such fast passenger train, and the only one through Colne Park is distinctly really faster at 60 mph or over.

The 8.45pm train from Ipswich was an excellent effort with a set time of 25½ minutes to Stratford and speeds of 50 mph between Stratford and Ipswich. 30% high down the bank, 42 through Colne Park – most excellent – and 50% high down the bank to Stratford.

I was very lucky to find one more repeat early run on the 8.45pm Colchester and Harwich express from Shenfield, which gave me the feeling of a London train and was excellent. It was a packed and heavy train which left 12 minutes late, and by excellent running arrived a quarter of a minute early, chiefly by reason of the fast start and a sustained 60 mph to Strat.

Now two repeat runs during the 'King's Notebooks' period on the GE Main Line are well worthy of inclusion. The first and only such fast passenger train, and the only one through Colne Park is distinctly really faster at 60 mph or over.

The 8.45pm train from Ipswich was an excellent effort with a set time of 25½ minutes to Stratford and speeds of 50 mph between Stratford and Ipswich. 30% high down the bank, 42 through Colne Park – most excellent – and 50% high down the bank to Stratford.

I was very lucky to find one more repeat early run on the 8.45pm Colchester and Harwich express from Shenfield, which gave me the feeling of a London train and was excellent. It was a packed and heavy train which left 12 minutes late, and by excellent running arrived a quarter of a minute early, chiefly by reason of the fast start and a sustained 60 mph to Strat.

Now two repeat runs during the 'King's Notebooks' period on the GE Main Line are well worthy of inclusion. The first and only such fast passenger train, and the only one through Colne Park is distinctly really faster at 60 mph or over.

The 8.45pm train from Ipswich was an excellent effort with a set time of 25½ minutes to Stratford and speeds of 50 mph between Stratford and Ipswich. 30% high down the bank, 42 through Colne Park – most excellent – and 50% high down the bank to Stratford.

I was very lucky to find one more repeat early run on the 8.45pm Colchester and Harwich express from Shenfield, which gave me the feeling of a London train and was excellent. It was a packed and heavy train which left 12 minutes late, and by excellent running arrived a quarter of a minute early, chiefly by reason of the fast start and a sustained 60 mph to Strat.

Now two repeat runs during the 'King's Notebooks' period on the GE Main Line are well worthy of inclusion. The first and only such fast passenger train, and the only one through Colne Park is distinctly really faster at 60 mph or over.

The 8.45pm train from Ipswich was an excellent effort with a set time of 25½ minutes to Stratford and speeds of 50 mph between Stratford and Ipswich. 30% high down the bank, 42 through Colne Park – most excellent – and 50% high down the bank to Stratford.

I was very lucky to find one more repeat early run on the 8.45pm Colchester and Harwich express from Shenfield, which gave me the feeling of a London train and was excellent. It was a packed and heavy train which left 12 minutes late, and by excellent running arrived a quarter of a minute early, chiefly by reason of the fast start and a sustained 60 mph to Strat.

Now two repeat runs during the 'King's Notebooks' period on the GE Main Line are well worthy of inclusion. The first and only such fast passenger train, and the only one through Colne Park is distinctly really faster at 60 mph or over.

The 8.45pm train from Ipswich was an excellent effort with a set time of 25½ minutes to Stratford and speeds of 50 mph between Stratford and Ipswich. 30% high down the bank, 42 through Colne Park – most excellent – and 50% high down the bank to Stratford.

I was very lucky to find one more repeat early run on the 8.45pm Colchester and Harwich express from Shenfield, which gave me the feeling of a London train and was excellent. It was a packed and heavy train which left 12 minutes late, and by excellent running arrived a quarter of a minute early, chiefly by reason of the fast start and a sustained 60 mph to Strat.

Now two repeat runs during the 'King's Notebooks' period on the GE Main Line are well worthy of inclusion. The first and only such fast passenger train, and the only one through Colne Park is distinctly really faster at 60 mph or over.

The 8.45pm train from Ipswich was an excellent effort with a set time of 25½ minutes to Stratford and speeds of 50 mph between Stratford and Ipswich. 30% high down the bank, 42 through Colne Park – most excellent – and 50% high down the bank to Stratford.

I was very lucky to find one more repeat early run on the 8.45pm Colchester and Harwich express from Shenfield, which gave me the feeling of a London train and was excellent. It was a packed and heavy train which left 12 minutes late, and by excellent running arrived a quarter of a minute early, chiefly by reason of the fast start and a sustained 60 mph to Strat.

Now two repeat runs during the 'King's Notebooks' period on the GE Main Line are well worthy of inclusion. The first and only such fast passenger train, and the only one through Colne Park is distinctly really faster at 60 mph or over.

The 8.45pm train from Ipswich was an excellent effort with a set time of 25½ minutes to Stratford and speeds of 50 mph between Stratford and Ipswich. 30% high down the bank, 42 through Colne Park – most excellent – and 50% high down the bank to Stratford.

I was very lucky to find one more repeat early run on the 8.45pm Colchester and Harwich express from Shenfield, which gave me the feeling of a London train and was excellent. It was a packed and heavy train which left 12 minutes late, and by excellent running arrived a quarter of a minute early, chiefly by reason of the fast start and a sustained 60 mph to Strat.

Now two repeat runs during the 'King's Notebooks' period on the GE Main Line are well worthy of inclusion. The first and only such fast passenger train, and the only one through Colne Park is distinctly really faster at 60 mph or over.

The 8.45pm train from Ipswich was an excellent effort with a set time of 25½ minutes to Stratford and speeds of 50 mph between Stratford and Ipswich. 30% high down the bank, 42 through Colne Park – most excellent – and 50% high down the bank to Stratford.

I was very lucky to find one more repeat early run on the 8.45pm Colchester and Harwich express from Shenfield, which gave me the feeling of a London train and was excellent. It was a packed and heavy train which left 12 minutes late, and by excellent running arrived a quarter of a minute early, chiefly by reason of the fast start and a sustained 60 mph to Strat.

Now two repeat runs during the 'King's Notebooks' period on the GE Main Line are well worthy

13. SOFTWARE

- We offer an "off-the-shelf" range of items on CD-ROMs or data DVDs, as listed below.
- Please note that the data DVDs require a computer with a DVD drive (not just a CD drive) to read them. A domestic DVD player will not suffice.
- We believe that our software will work on any PC. Should you find problems with it on your machine, however, return it and you will get a full refund with no quibble.
- You are welcome to print anything out for your personal use but we ask you not to act as a centre to supply all your friends. Encourage them to get their own copy – should a friend without a PC wish for a print-out, the Sales Officer will gladly quote for this. Otherwise you are simply not being fair to the rest of the Society's members. We trust that you respect that.

Custom Software: Since printed items now exist as digital files, it is possible to have almost any combination of items supplied to order on a CD-ROM. Just send a letter with SAE or an email of your wants to sales@qersociety.org.uk for a quote. (The cheapest and best way to do this, however, is to download those files instantly via the Files Emporium on our web site).

Magazines and Journals:

GERM	DVD	10.00*	The Great Eastern Railway Magazine. All 16 volumes of this monthly publication, from 1911 to 1926, are on a double DVD. Fully word-searchable. [<i>*£15.00 for non-members</i>]
LNEM	DVD	10.00*	The LNER Magazine. All 21 volumes of this monthly publication, from 1927 to 1947, are on a double DVD. 11,000 pages. Fully word-searchable. [<i>*£15.00 for non-members</i>]
BREM	DVD	10.00*	The B.R. (Eastern Region) Magazine. All 16 volumes of this monthly publication, from 1948 to 1963, are on a double DVD. Fully word-searchable. [<i>*£15.00 for non-members</i>]
RTM	DVD	10.00*	The <i>Railway & Travel Monthly</i> 1910-1922 (similar to its competitor the <i>Railway Magazine</i> of the period) – over 12,000 pages on two DVDs. [<i>*£15.00 for non-members</i>]
LCM	DVD	10.00*	The Locomotive Magazine Jan. 1896 to Dec. 1923 (376 issues). [<i>*£15.00 for non-members</i>]
LCM2	DVD	10.00*	The Locomotive Magazine Jan. 1924 to Dec. 1953 (360 issues). [<i>*£15.00 for non-members</i>]
J1-200	DVD	20.00	NOT YET AVAILABLE - OUT SHORTLY. (The download is available in the Files Emporium). The GERS Journals from No. 1 to No. 200. They are supplied as Acrobat files. A list of all the contents plus indexes to J1-100 and J101-200 are included. As a bonus you also get all 5 Journal Specials and GE News 1-200. Over 13,500 pages in total. [<i>Available to members only – if you have already bought an earlier edition, you may buy this as an update for £6 (£5 for the download).</i>]
NW1-140	CD	5.00	Issues 1 to 140 of the Great Eastern News on a single CD as pdf files. Word-searchable. [<i>Available to members only</i>]
NW141-180	CD	5.00	Issues 141-180 of the GE News. Word-searchable. [<i>Available to members only</i>]
CW4	CD	3.00	Fourth edition. A 788-page 'e-book', containing all the postings & replies from the Society's email group from Jan 2002 until January 2014. These have appeared in GE News Nos. 111-160, collected together here into a single word-searchable file. [<i>£2.00 if you purchased an earlier edition</i>]
ERS	CD	£4.00	Nine magazines of the one-time ER Staff Railway Society 1970-2.
UTD	CD	4.00	United in Norfolk 1919-1931. A 'scrapbook' of contemporary local press cuttings. As well as the United bus company, these cuttings relate to other transport matters including the Norwich trams and the GER/LNER
REP	CD	10.00	Directors' Reports to Shareholders 1837-1948 (ECR, GER, LNER). Over 3600 pages, professionally scanned.
TA	DVD	10.00	33 copies of 'Transport Age', glossy, for freight customers. 40 copies of 'British Transport Review', academic. 1950s-60s.
RCJ	CD	£5.00	The Journal of the Railway Club – 59 issues from Dec 1906 to Oct 1911.

Indexes and lists:

N122	CD	2.50	Catalogue of the Liverpool Street Maritime Photos at the NRM.
Index	CD	3.00	Journal indexes 1-100 and 101-200. NEW EDITION
TNA	CD	5.00	A first-timer's guide to TNA and copies of M102, M183, M318, M322 and N131, as included in the CDs of Minutes.

A SMALL EXTRACT FROM THE FIRST-TIMER'S GUIDE TO TNA (THE NATIONAL ARCHIVES): "Your reader's ticket will operate the entrance 'barrier' to the reading rooms by means of a bar code, which is swiped through the reading head on the same side as a small indicator light (a fairly quick movement is required to make the equipment work). Do not try and walk through the 'barrier' until it 'beeps' and another light changes colour (or you will upset the system!)."

Minutes Summaries:

ECR	CD	7.00	All of the existing Information Sheets summarising the Minutes of the Eastern Counties Railway, a first-timer's guide to TNA and copies of M102, M183, M318 and M322, tables of weights, measures and money in Victorian times.
GER	CD	7.00	As for the ECR CD but with all of the existing Information Sheets summarising the Minutes of the Great Eastern Railway and the Norfolk & Suffolk Joint Railway, plus a glossary of some of the terms encountered in the Minutes.
MIN	CD	10.00	The ECR and GER CDs of Minutes Summaries combined on a single CD.

*The above three CDs are updated as new summaries are produced. **Once you have bought a CD you may then any time in the future as often as you wish purchase the latest edition of it for £3 (ECR or GER) or £5 (combined).***

SIG	CD	2.00	Summary of Signalling Items (S100, S103 and S104 combined). Also includes the first timer's guide to TNA.
-----	----	------	---

Maps and drawings:

LON	DVD	8.00	Stanford's 6-inch maps of London, c.1885, in 24 sheets. Each sheet is present as a PDF file for on-screen viewing, and as a huge TIFF file to take to a local copy shop to print a full-size original in colour on an A2 sheet of paper.
MP	CD	15.00	Maps and plans. It contains the 1919 GER system maps book (A2). All the P-series Information Sheets. All the V-series visits notes. X-files (extra sets of 25" plans not otherwise available of Lowestoft (1883 and 1905), Bury St Edmunds (1926) and Peterborough East (1901)). Index to the P-, V- and X- files. M303 and M357 1960s route-learning maps.
A2	CD	3.50	The 1919 GER system diagrammatic maps, as described in Section 2. With this digital version, you can zoom in on the screen to see finer detail.
JG	CD	15.00	All the drawings listed above under '9 John Gardner Drawings'. Extras include some Lyn Brooks drawings (eg the T26/E4 'Intermediates') plus 10 road vehicles by Dennis West. All will print out on A4-sized paper, mostly at 4mm scale and 7mm scale (in the last case usually on two overlapping sheets), plus full A4 displays. <i>Print-outs of individual drawings can also be supplied at 4mm or 7mm at £1.00.</i>
CH	CD	3.00	The Clearing House map of Eastern England for 1917 both as an Acrobat and a Word file, each suitable for zooming-in. It covers an area from the North Norfolk coast down to the Thames in London, and includes the whole of the M&GN lines: to the south it reaches to Marlow and Didcot; to the west Leicester, Rugby and Oxford; to the north Spalding, Grantham and Nottingham. Also included are extracts from similar maps showing the GN&GE Joint and part of London south of the Thames.
FLX	CD	5.00	Scale drawings and photos of Felixstowe Town station in 1974.

Miscellaneous:

TRO	CD	5.00	The re-modelling of Norwich and the new Trowse swing bridge in 1985-7. Around 100 colour photos plus contemporary reports of the developments.
LM	CD	7.00	All six 'Locos of the GER' (L104-8 and L110: see Section 5 for details) plus a bonus of the original artwork (over 300 drawings) as 'jpg' files which you may print out enlarged for your personal use. Now also has L100 & L126 (section 5) and L115 (section 3).
L&C	CD	5.00	Locomotive and carriage rostered diagrams: L118, L119 and L120 (see Section 5) as Acrobat files.
Carr	CD	5.00	Acrobat files of GE Carriage Workings for GE Country Branches 1950 (already issued as L119 and on the L&C CD); Cambridge Main Line 1953 (also available as new Information Sheet L121); Cambridge Main Line 1957 (only on this CD); and the whole GE area 1967 domestic services (only on this CD) and Continental workings (as on Information Sheet M300).
MGN	CD	3.00	Word-searchable Acrobat file of the 292-page 1933 M&GN Rule Book (believed to be virtually the same as the LNER one).
NRW	CD	3.00	25 snapshots taken at Norwich Thorpe in the 1950s. Includes maps of the track layout there.
LT	CD	3.00	Word-searchable Acrobat files of London Transport documents (a Rule Book plus amendments, breakdown arrangements and station working instructions all from 1983/4). The unique situation of the Epping-Ongar branch and references to the LTSR line out of Fenchurch Street are included.
FR8	CD	3.00	1960s freight. Freight Train Facilities (BR(E) 1961, 48p) – information for prospective customers about services on offer. Working Manual for Rail Staff (BR 1969, 330p) – instructions re wagon labels, loading, dangerous goods, containers, etc.
WTT	CD	10.00	Working Timetables – all the present Information Sheets except T134-5, plus some (marked with *) which are exclusive to this CD. Included are ECR 1856; GER 1863, 1866*, 1870*, 1875* and 1913; GN&GE Joint 1895 and 1900; LT&SR 1882 Jan* and Sept, 1888*, 1894*, 1908* and undated LMS period; BR(E) Section K 1960; Colne Valley 1922 and 1923; and Mid-Suffolk 1919, 1921 and 1922.
MTT	CD	6.00	M&GN Working Timetables for July 1903 (also available as T135), July 1927 (also available as T134) and for October 1933, plus the word-searchable 246-page Appendix to the M&GN WTT 1913.
90s	CD	6.00	The end of the 19th Century: some glimpse of a decade. Has Board and Way & Works minutes summaries from the time; M341, M376, M432, M441, M442 (all from Section 4 in this Sales List); M187 and M202 (Section 5).
WKN	CD	4.00	GER Weekly Notices & Weekly WTTs between 1898 and 1914. 1052 searchable pages.
VID	DVD	10.00	NEW: Bernard Walsh's 8mm movies from the early 1960's mainly of East Anglian railways. A set of 2 DVDs: the first will play on a domestic player, the second is digital with MP4 files, notes and maps.

SALES HAVE CHANGED COMPLETELY, BUT SALES HAVE STAYED EXACTLY THE SAME!

The Society is pleased to report that, with seven years of experience already, our new facilities for sales are working well. Put briefly, the situation nowadays is:-

- This traditional **Sales List** remains unchanged. It is basically a mail order business, and what it sells are printed goods and "off-the-shelf" software (such as the GER Magazine DVDs and the Working Timetables CD).
- On our web site is the **Files Emporium**. This is essentially an on-line initiative, and what it sells are **files**. You add your choices to a shopping cart and pay by PayPal or card. Your files will generally be downloaded, often instantly. Our "off-the-shelf" software may be purchased here for posting too. Go to www.gersociety.org.uk, click on 'Sales' in the left-hand column then choose 'Files Emporium'.

MORE ABOUT THE SALES LIST:

For those who have no computer your situation has not changed at all, and in no way are you worse off now. The Sales List continues, with its full range of products, and you can still send off an order plus a cheque.

The October 2011 prices mostly still apply! Prices generally do not change – indeed in those cases where there *has* been a change over the past decade some Information Sheets have actually become cheaper (notably the printed Minutes summaries, mostly now only 80p with a further discount for bulk). The sole price rises have been where we are dependent on outside services, so the binders for example have had to go up to reflect their increasing cost to us. Also the large rise in postage costs means we have had to increase your contribution towards that, with a minimum of £1.20. We are sorry about this, but hope you understand.

With the Sales List the one concession to the times is that customers who do happen to have a computer can now send their order by e-mail rather than 'snail mail' and can pay with a card, via PayPal or via Nochex instead of by a written cheque. This has in no way affected the way the Sales List itself works, though, and it firmly retains its traditional framework. To make use of this facility, go to 'Sales' on our web site then choose 'The Sales List'. You can then access the order form by scrolling down to 'Order Online'. There are only four spaces in the order form, but if need be you can combine items (e.g. 'J120 & J121 £5.00').

THE EXPANDED SALES LIST:

This is on the traditional Sales List section of our web site now for those who can access the internet, and serves the purpose of giving far more information about the items in the Sales List than can possibly be squeezed into its eight packed pages. (It is a valuable spin-off from the Emporium, where there was no such constraint of space in describing the files.)

At present there are 50 pages. The items are listed in order, starting with A1 and going through to V11. A full description and the number of pages are provided for every one, and you are told if it is included in any "off the shelf" software. The order code for the corresponding file in the Emporium is also provided – so if you wished to go down that route instead, you can just enter this code into the Emporium's search box to be taken straight to it.

(The order codes are different in the Files Emporium, both to distinguish the files from the printed items and because the opportunity has been taken to divide them into more sections – 24 of them – thus ending the Sales List's monster 'M' for miscellaneous / minutes which now stretches all the way from M100 to M532!)

To access these expanded details, or to send your Sales List order by filling the order form in on-line, go to our web site (www.gersociety.org.uk) and click on 'Sales' in the left-hand column then pick 'The Sales List'.

MORE ABOUT THE FILES EMPORIUM:

Almost all the items in the Sales List have a corresponding file in the Files Emporium. The few exceptions are the binders (obviously!) and the minutes summaries (which are on offer there, but by committee as on the CDs rather than by individual information sheet). You can find the equivalent of a Sales List item by going to the Files Emporium, clicking the big blue 'Search the Emporium' button near the top left and entering the Sales List order code, e.g. L118 or P107.

There are also currently about 600 files in the Emporium which do not appear in the Sales List at all. Thus far more working timetables are on offer there, for example; and something like the 258-page guards' rulebook could never be compressed into an Information Sheet.

As a further example, some coloured scans of the menu and toast list for the GER Jubilee dinner in 1912 are to hand. No way could they form an Information Sheet, but it is something which others might like to see so the file appears as item RH006 in Section RH ('Railways: Historical Aspects').

To get a list of all these files which are unique to the Files Emporium, click the 'Search the Emporium' button and put 'extra files' into the search box. It is to be hoped that, in future, **members might make contributions** – to offer to donate scans of an item in their possession which others might be interested in, for instance.

There is now a section of **photographs**, as well. They do not lend themselves to the Sales List, but can be made available as files, and look very striking on-screen.

Half-Yearly Meetings - An Important Word of Warning: The Publications Sales Officer has cut down on the amount of stock he holds as it is now far easier to print on demand. No longer will every item be available on the day. BACK NUMBERS OF JOURNALS WILL BE BROUGHT ONLY TO ORDER. Consequently for half-yearly meetings it will be far more important to order in advance to avoid disappointment. You should contact him by post or e-mail (addresses below) and pay on the day, giving an email address or enclosing an SAE if you place your order by post and wish to have receipt of it confirmed. There is no obligation: if you just want to inspect something and then decide you do not want it - that is perfectly OK.

Place your order from the Sales List with:

**Publications Sales Officer
Barry Jackson
14 Quantock Close
BEDFORD
MK41 9EW**

e-mail: sales@gersociety.org.uk

Cheques payable to GERS Publications, please.

...or go to www.gersociety.org.uk ,

click on 'Sales' then select 'Sales List'.

Postage & Packing:-

- Postal charges have risen sharply, but most of our prices have remained the same. We have reluctantly been compelled to increase the amount we charge as your contribution towards this, therefore.
- For any software ordered, reckon on a single charge of **£2.00**.
- For the rest of your order, and for all other orders, work on the following basis:-
 - Up to £30 add 20%, minimum **£2.00**
 - £30.01 to £50 add 15%
 - £50.01 to £80 add 10%
 - £80.01 to £100 add 5%
 - Over £100 Post free
- Please add a further £1.50 for any Lxx plans and drawings (Section 9) if you wish for them to be supplied unfolded, rolled in a cardboard tube.
- These approximations are offered as a reasonably simple way to cope with what is now a complicated situation, on a 'some you win, some you lose' basis. Where costs permit, your order will be sent first class; otherwise second class or parcel post will have to be used.